



舟山市豪立德泵业有限公司
Zhuoshan Haolide Pump Industry Co.,Ltd

浙江省 舟山市 定海区 马岙工业园区三江大道 79 号
No. 79, Sanjiang Avenue, Ma'ao Industry Zone, Dinghai, Zhoushan, China

T: +86-0580-8082896 / 2269588

F: 0580-2269566 E: 1536266183@qq.com

E: info@walterpool.com.cn

Email: cadisdon@haolidepoolequip.com (中文/English)

cadisdon01@haolidepoolequip.com(English)

au.office@haolidepoolequip.com (English)

Web (网页) : www.haolidepoolequip.com

Online mall (线上商城) : haolidemall.com



源自西班牙的一流技术
TECHNOLOGY FROM SPAIN

舟山市豪立德泵业有限公司
**ZHUOSHAN HAOLIDE PUMP
INDUSTRY CO.,LTD**

我们通过了国家质检认证、疾控检测认证、环保认证、3C 认证、CE 认证等多项认证
We have passed multiple certifications such as national quality inspection certification, disease control testing certification, environmental protection certification, 3C certification, CE certification, etc

ABOUT US

关于我们



Cadisdon®
凯迪斯顿



Walter

舟山市豪立德泵业有限公司于 2004 年成立。集研发、设计、生产、销售于一体，主要生产自吸式循环过滤水泵及高压鼓风机，玻璃纤维过滤砂缸、臭氧反应罐、吸附罐、埋地一体化循环过滤设备等。广泛应用于桑拿、温泉、SPA、游泳池、水上乐园、海洋馆、水族池、水产养殖及雨水、河水、工业水处理领域等。

公司拥有专业的员工团队和超卓的设备，不断深化内部管理，积极改革创新，坚持走品牌化路线，西班牙授权生产品牌为凯迪斯顿（CADISDON），自主品牌有浦力德（porlid）和豪立（HAOLI）等。

我们已通过国家质检认证、疾控检测认证、环保认证、3C 认证、CE 认证等多项认证。保障产品质量，提升企业核心竞争力，“品质至尊，诚信务实，开拓创新，客户至上”让我们的营销网络遍及全球，我们努力研发生产高品质的产品，为客户提供优质完善的服务。

Zhoushan Haolide Pump Co., Ltd. was established in 2004. Set research and development, design, production and sales in one, the main production of self-suction circulating filter water pump and high pressure blower, glass fiber filter sand filter, ozone reaction tank, adsorption tank, buried integrated circulating filter equipment, etc. Widely used in sauna, hot spring, SPA, swimming pool, water park, aquarium, aquaculture and rainwater, river water, industrial water treatment fields.

The company has a professional staff team and superior equipment, constantly deepen internal management, active reform and innovation, adhere to the brand line, the Spanish authorized production brand CADISDON, independent brands have Porlid and HAOLI and so on.

Our company has passed the national quality inspection certification, disease control testing certification, environmental protection certification, 3C certification, CE certification and other certifications. Ensure product quality, enhance the core competitiveness of enterprises, "Supreme quality, integrity and pragmatism, innovation, customer first" let our marketing network throughout the world, we strive to develop and produce high-quality products, to provide customers with quality and perfect service.



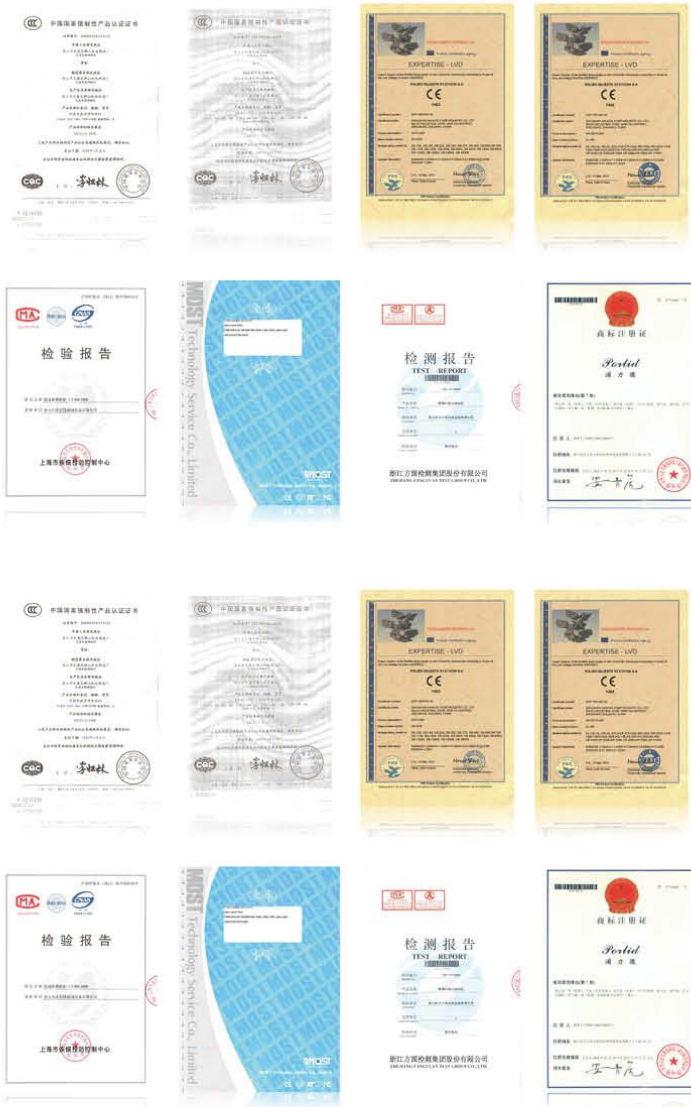
目录 / Contents

05 CX 型水泵 CX Series Water Pump	39 FU 系列铸铁泵 FU Series Cast Iron Water Pump
07 CN 型水泵 CN Series Water Pump	41 CUD 不锈钢水泵 CUD Series Stainless Steel Water Pump
09 BLS 型水泵 BLS Series Water Pump	43 CUL 不锈钢水泵 CUL Series Stainless Steel Water Pump
11 BL 型水泵 BL Series Water Pump	45 CU 不锈钢水泵 CU Series Stainless Steel Water Pump
13 BLB 大功率塑料水泵 BLB High Power Plastic Water Pump	47 H 系列铸铁泵 H Series Cast Iron Water Pump
15 HQS 型水泵 HQS Series Water Pump	49 HS 系列铸铁泵 HS Series Cast Iron Water Pump
17 HQ 型水泵 HQ Series Water Pump	51 EL 系列按摩泵 EL Series Bathtub Pump
19 HLB 型水泵 HLB Series Water Pump	53 SLS 过滤器 SLS Filter With Pump Set
21 HL 型水泵 HL Series Water Pump	55 HSB 型水泵 HSB Series Water Pump
23 HLA 型水泵 HLA Series Water Pump	57 VFP 型水泵 VFP Series Variable Speed Water Pump
25 HLD 型水泵 HLD Series Water Pump	59 CC 系列商用大型砂缸 CC Series Commercial Sand Filter
27 ELS 型水泵 ELS Series Water Pump	61 CT 系列顶出砂缸 CT Series Top Mount Sand Filter
29 SUP 大功率塑料水泵 SUP High Power Plastic Water Pump	63 CS 系列侧出砂缸 CS Series Side Mount Sand Filter
31 SUP1 大功率塑料水泵 SUP1 High Power Plastic Water Pump	65 单级单相旋涡式鼓风机系列 Single Stage Three Phase Side Channel Air Blower
33 SUN 大功率塑料水泵 SUN High Power Plastic Water Pump	Double Stage Three Phase Side Channel Air Blower
35 FD 系列铸铁泵 FD Series Cast Iron Water Pump	单级三相旋涡式鼓风机系列
37 FDU 系列铸铁泵 FDU Series Cast Iron Water Pump	



Certification

企业资质



Company Display

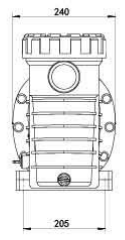
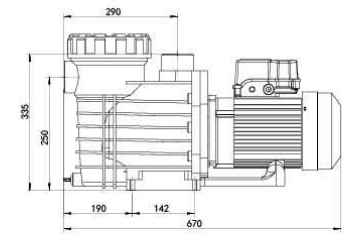
企业展示



CX 型水泵 CX Series Water Pump



- IP55 waterproof standard.
- Big flow rate.
- Ultra-quiet.
- Maximum working pres-sure up to 6kg/cm².
- 316 stainless steel shaft.
- Graphite/ceramic mechanical seal.
- Suitable for maximum hot water* temperature up to 70 C.



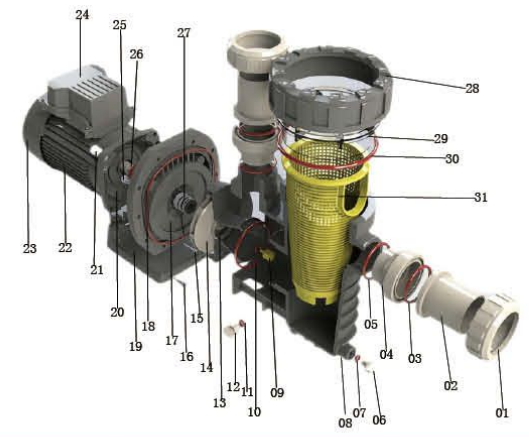
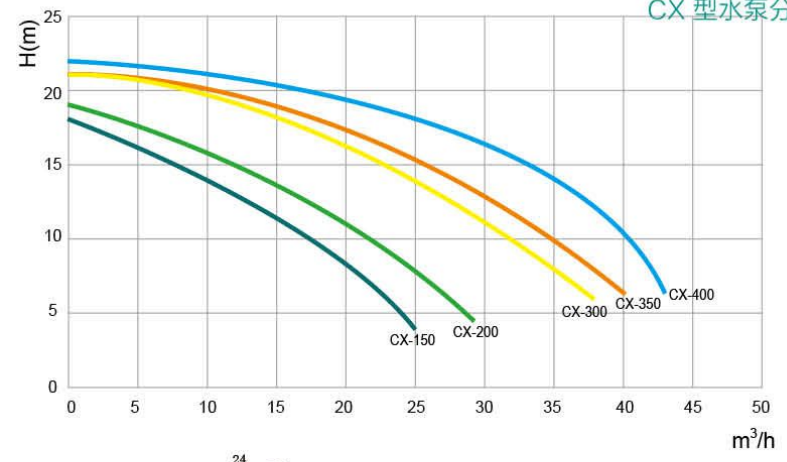
- IP55 防水标准;
- 流量大;
- 超静音;
- 承压能力强, 可达到 6kg/cm²;
- 316 不锈钢机轴;
- 石墨 / 碳化硅机械密封;
- 最高适用于 70°C 温泉;

Model	Voltage	Power	Hmax (m)	Qmax (m ³ /h)	Port Size (mm)	
型号	电压 (V)	KW	HP	最大扬程	最大流量	管径
CX-150	220V/380V 50Hz/60Hz	1.1	1.5	18	25	63 2"
CX-200		1.5	2.0	19	30	
CX-300		2.2	3.0	21	38	
CX-350		2.6	3.5	21	40	
CX-400	380V 50Hz/60Hz	3.0	4.0	22	43	

以上数据仅供参考, 以每次出货产品数据为准
Above size only for reference ,pls take shipping products size as correct.

CX Series Water Pump Technical Characteristics

CX 型水泵分解图

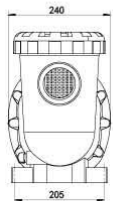
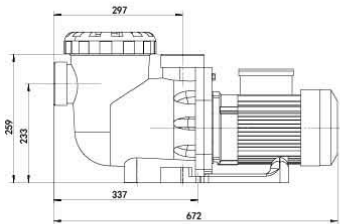


Number	Name	Number	Name	Number	Name
编号	配件名称	编号	配件名称	编号	配件名称
01	活接螺帽 Union Nut	11	O 型密封圈 O-ring Seal	21	螺丝 *4 Screw*4
02	衬套 Union Bushing	12	螺栓 Bolt	22	电机 Motor
03	O 型密封圈 O-ring Seal	13	散水器 Diffuser	23	后风罩 Ventilation Hood
04	活接 Union	14	叶轮 Impeller	24	电机接线盒 Junction Box
05	O 型密封圈 O-ring Seal	15	螺丝 *2 Screw*2	25	螺丝 *10 Screw*10
06	螺栓 Bolt	16	螺丝 *2 Screw*2	26	甩水环 water deflector ring
07	O 型密封圈 O-ring Seal	17	法兰 Flange	27	机械密封 Mechanical seal
08	泵体 Pump Body	18	O 型密封圈 O-ring Seal	28	大螺帽 Lid Lock Ring
09	止退螺丝 Backstop Screw	19	底座 Base	29	透明盖 Transparent Cover
10	O 型密封圈 O-ring Seal	20	电机法兰 Motor Flange	30	O 型密封圈 O-ring Seal
				31	过滤篮 Filter Basket

CN 型水泵 CN Series Water Pump



- IP55 waterproof standard.
- Big flow rate.
- Ultra-quiet.
- Maximum working pres-sure up to 6kg/cm².
- 316 stainless steel shaft.
- Graphite/ceramic mechanical seal.
- Suitable for maximum hot water* -temperature up to 70 C.



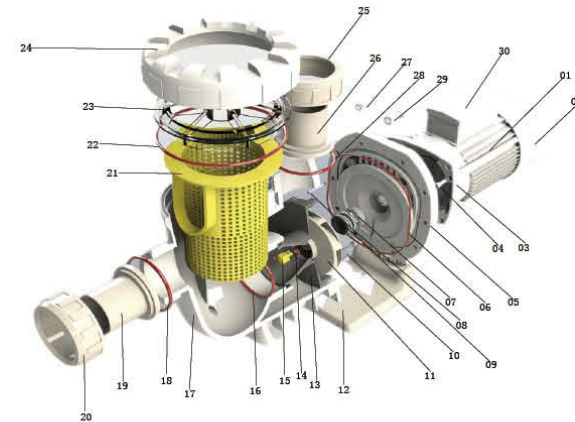
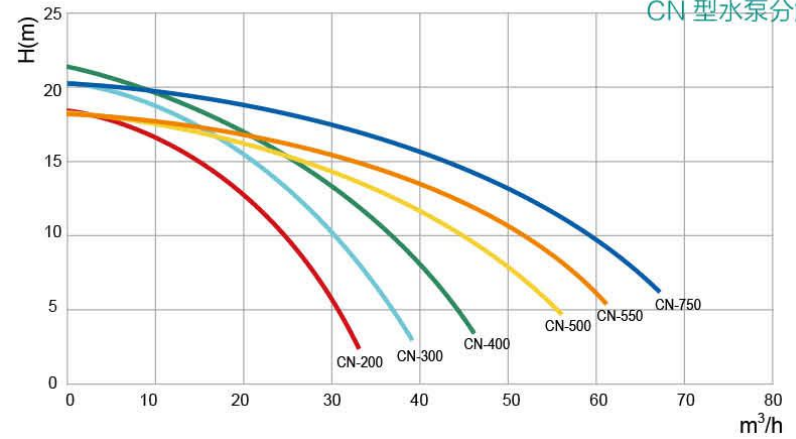
- IP55 防水标准;
- 流量大;
- 超静音;
- 承压能力强, 可达到 6kg/cm²;
- 316 不锈钢机轴;
- 石墨 / 碳化硅机械密封;
- 最高适用于 70°C 温泉;

Model	Voltage	Power		Hmax (m)	Qmax (m ³ /h)	Port Size (mm)
型号	电压 (V)	KW	HP	最大扬程	最大流量	管径
CN-200	220V/380V	1.5	2.0	19	33	63 2"
CN-300	50Hz/60Hz	2.2	3.0	21	39	
CN-400	380V 50Hz/60Hz	3.0	4.0	22	46	63/75 2"/2.5"
CN-500		3.8	5.0	19	56	
CN-550		4.0	5.5	19	63	
CN-750		5.5	7.5	21	72	75 2.5"

以上数据仅供参考, 以每次出货产品数据为准
Above size only for reference ,pls take shipping products size as correct.

CN Series Water Pump Technical Characteristics

CN 型水泵分解图

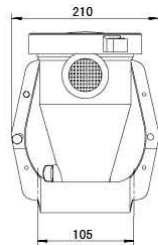
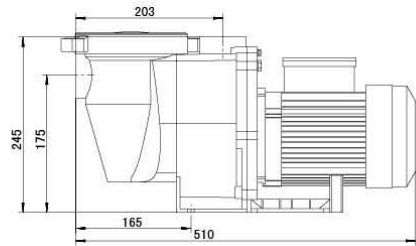


Number	Name	Number	Name	Number	Name
编号	配件名称	编号	配件名称	编号	配件名称
01	电机 Motor	11	叶轮 Impeller	21	过滤篮 Filter Basket
02	后风罩 Ventilation Hood	12	底脚 Base	22	O型密封圈 O-ring Seal
03	电机法兰 Motor Flange	13	散水器 Diffuser	23	透明盖 Transparent Cover
04	螺丝 *3 Screw*3	14	O型密封圈 O-ring Seal	24	大螺母 Lid Lock Ring
05	法兰 Flange	15	止退螺丝 Backstop Screw	25	活接螺帽 Union Nut
06	O型密封圈 O-ring Seal	16	O型密封圈 O-ring Seal	26	衬套 Union Bushing
07	机械密封 Mechanical seal	17	棉体 Filter VAT	27	螺丝 *10 Screw*10
08	机械密封 Mechanical seal	18	O型密封圈 O-ring Seal	28	O型密封圈 O-ring Seal
09	螺丝 *2 Screw*2	19	衬套 Union Bushing	29	螺丝 *4 Screw*4
10	螺丝 *2 Screw*2	20	活接螺帽 Union Nut	30	电机接线盒 Junction Box

BLS 型水泵 BLS Series Water Pump



- IP55 waterproof standard.
- Big flow rate.
- Ultra-quiet.
- Maximum working pres-sure up to 6kg/cm².
- 316 stainless steel shaft.
- Graphite/ceramic mechanical seal.
- Suitable for maximum hot water*.
- temperature up to 70 C.



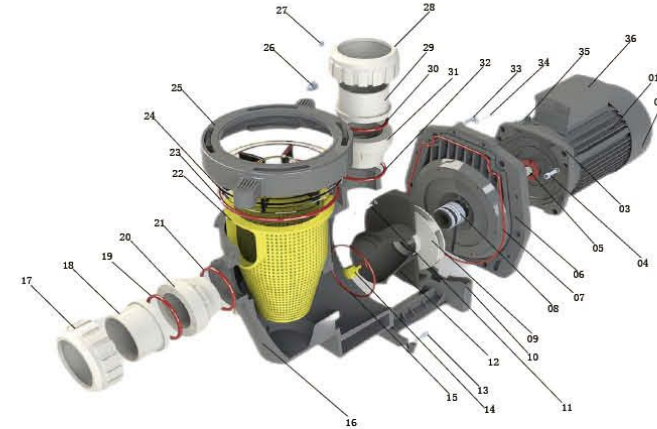
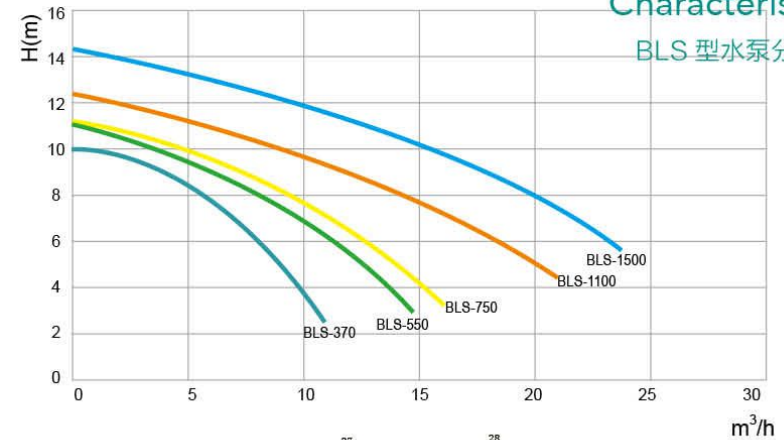
- IP55 防水标准;
- 流量大;
- 超静音;
- 承压能力强, 可达到 6kg/cm²;
- 316 不锈钢机轴;
- 石墨 / 碳化硅机械密封;
- 最高适用于 70°C 温泉;

Model	Voltage	Power		Hmax (m)	Qmax (m ³ /h)	Port Size (mm)
型号	电压 (V)	KW	HP	最大扬程	最大流量	管径
BLS-370	220V 50Hz/60Hz	0.37	0.5	10	11	50 1.5"
BLS-550		0.5	0.75	10	15	
BLS-750		0.75	1.0	11	17	
BLS-1100		1.1	1.5	12	22	
BLS-1500		1.5	2.0	14	25	

以上数据仅供参考, 以每次出货产品数据为准
Above size only for reference ,pls take shipping products size as correct.

BLS Series Water Pump Technical Characteristics

BLS 型水泵分解图

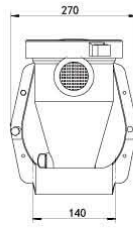
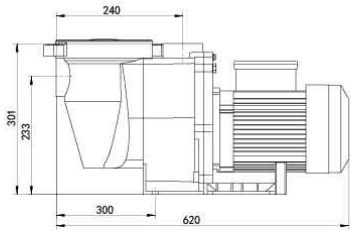


Number	Name	Number	Name	Number	Name
编号	配件名称	编号	配件名称	编号	配件名称
01	电机 Motor	13	螺丝 *2 Screw*2	25	大螺母 Lid Lock Ring
02	后风罩 Ventilation Hood	14	止退螺丝 Backstop Screw	26	螺帽 NUT
03	法兰 Flange	15	O 型密封圈 O-ring Seal	27	螺帽 NUT
04	螺丝 *3 Screw*3	16	桶体 Filter VAT	28	活接螺帽 Union Nut
05	甩水环 water deflector ring	17	活接螺帽 Union Nut	29	衬套 Union Bushing
06	法兰 Flange	18	衬套 Union Bushing	30	O 型密封圈 O-ring Seal
07	O 型密封圈 O-ring Seal	19	O 型密封圈 O-ring Seal	31	活接 Union
08	机械密封 Mechanical seal	20	活接 Union	32	O 型密封圈 O-ring Seal
09	叶轮 Impeller	21	O 型密封圈 O-ring Seal	33	螺丝 *6 Screw*6
10	底脚 Base	22	过滤篮 Filter Basket	34	螺丝 *6 Screw*6
11	螺丝 *2 Screw*2	23	O 型密封圈 O-ring Seal	35	螺丝 *4 Screw*4
12	散热器 Diffuser	24	透明盖 Transparent Cover	36	电机接线盒 Junction Box

BL 型水泵 BL Series Water Pump



- IP55 waterproof standard.
- Big flow rate.
- Ultra-quiet.
- Maximum working pres-sure up to 6kg/cm².
- 316 stainless steel shaft.
- Graphite/ceramic mechanical seal.
- Suitable for maximum hot water* temperature up to 70 C.



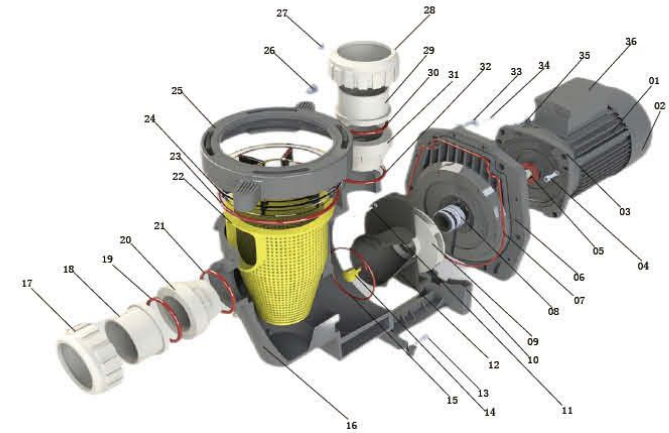
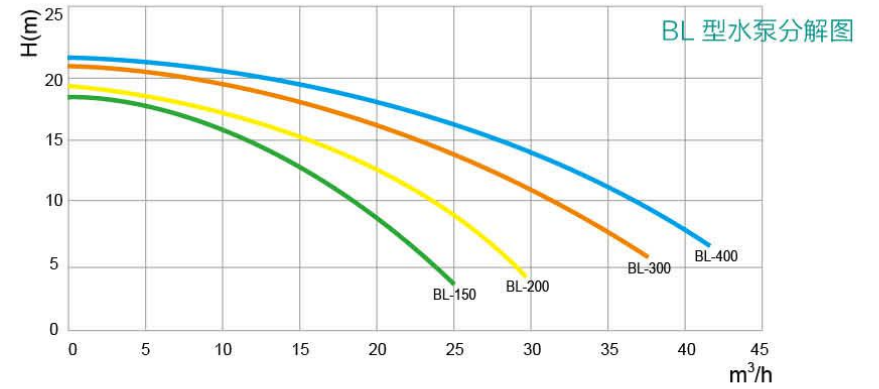
- IP55 防水标准;
- 流量大;
- 超静音;
- 承压能力强, 可达到 6kg/cm²;
- 316 不锈钢机轴;
- 石墨 / 碳化硅机械密封;
- 最高适用于 70°C 温泉;

Model	Voltage	Power		Hmax (m)	Qmax (m ³ /h)	Port Size (mm)
型号	电压 (V)	KW	HP	最大扬程	最大流量	管径
BL-150	220V/380V	1.1	1.5	1.8	28	63 2"
BL-200		1.5	2.0	1.9	30	
BL-300	50Hz/60Hz	2.2	3.0	21	38	
BL-400	380V/50Hz/60Hz	3.0	4.0	21	42	

以上数据仅供参考, 以每次出货产品数据为准

Above size only for reference ,pls take shipping products size as correct.

BL Series Water Pump Technical Characteristics



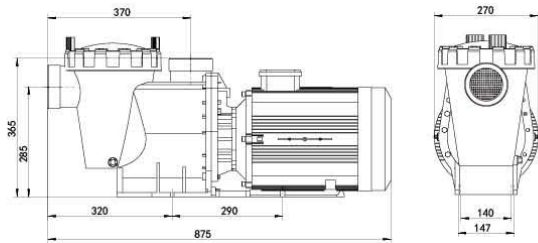
Number	Name	Number	Name	Number	Name
编号	配件名称	编号	配件名称	编号	配件名称
01	电机 Motor	13	螺丝 *2 Screw*2	25	大螺母 Lid Lock Ring
02	后风罩 Ventilation Hood	14	止退螺丝 Backstop Screw	26	螺帽 NUT
03	法兰 Flange	15	O 型密封圈 O-ring Seal	27	螺帽 NUT
04	螺丝 *3 Screw*3	16	桶体 Filter VAT	28	活接螺帽 Union Nut
05	甩水环 water deflector ring	17	活接螺帽 Union Nut	29	衬套 Union Bushing
06	法兰 Flange	18	衬套 Union Bushing	30	O 型密封圈 O-ring Seal
07	O 型密封圈 O-ring Seal	19	O 型密封圈 O-ring Seal	31	活接 Union
08	机械密封 Mechanical seal	20	活接 Union	32	O 型密封圈 O-ring Seal
09	叶轮 Impeller	21	O 型密封圈 O-ring Seal	33	螺丝 *6 Screw*6
10	底脚 Base	22	过滤篮 Filter Basket	34	螺丝 *6 Screw*6
11	螺丝 *2 Screw*2	23	O 型密封圈 O-ring Seal	35	螺丝 *4 Screw*4
12	散水器 diffuser	24	透明盖 Transparent Cover	36	电机接线盒 Junction Box

BLB 大功率塑料水泵

BLB High Power Plastic Water Pump



- IP55 waterproof standard.
- Big flow rate.
- Ultra-quiet.
- Maximum working pressure up to 6kg/cm^2 .
- 316 stainless steel shaft.
- Graphite/ceramic mechanical seal.
- Suitable for maximum hot water* temperature up to 70C .



- IP55 防水标准;
- 流量大;
- 超静音;
- 承压能力强, 可达到 6kg/cm^2 ;
- 316 不锈钢机轴;
- 石墨 / 碳化硅机械密封;
- 最高适用于 70°C 温泉;

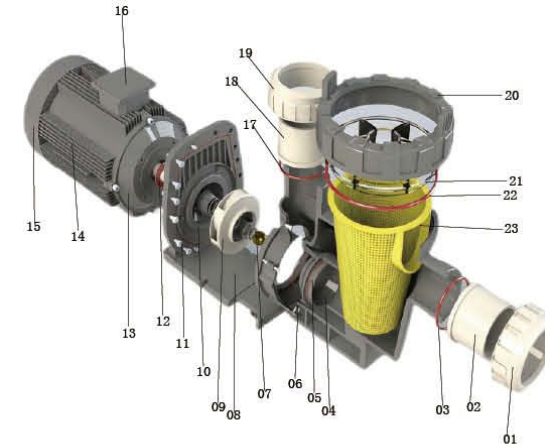
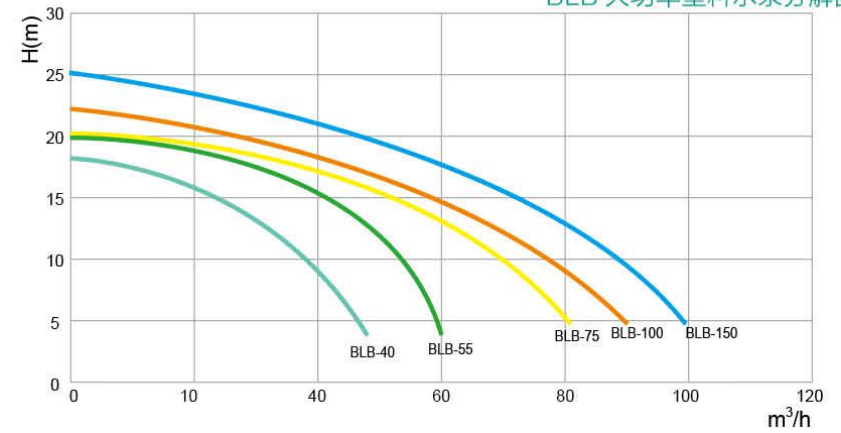
Model	Voltage	Power		Hmax (m)	Qmax (m ³ /h)	Port Size (mm)	Speed (r/min)
型号	电压 (V)	KW	HP	最大扬程	最大流量	管径	转速
BLB-40	220V/380V 50Hz/60Hz	3	4	18	48	90 3.0"	2800
BLB-55		4	5.5	20	60		
BLB-75		5.5	7.5	20	80		
BLB-100		7.5	10	22	90		
BLB-150		11	15	25	100		

以上数据仅供参考, 以每次出货产品数据为准

Above size only for reference ,pls take shipping products size as correct.

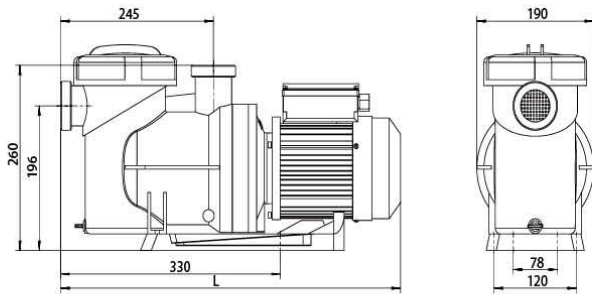
BLB High Power Plastic Water Pump Technical Characteristics

BLB 大功率塑料水泵分解图



Number	Name	Number	Name	Number	Name
编号	配件名称	编号	配件名称	编号	配件名称
01	活接螺帽	09	叶轮	17	O型密封圈
02	衬套	10	法兰	18	衬套
03	O型密封圈	11	螺丝?	19	活接螺帽
04	内衬板	12	甩水环	20	大螺帽
05	O型密封圈	13	电机法兰	21	透明盖
06	O型密封圈	14	电机	22	O型密封圈
07	螺母	15	后风罩	23	过滤篮
08	底座	16	电机接线盒		

HQS 型水泵 HQS Series Water Pump



- IP55 waterproof standard.
- Big flow rate.
- Ultra-quiet.
- Maximum working pressure up to 6kg/cm².
- 316 stainless steel shaft.
- Graphite/ceramic mechanical seal.
- Suitable for maximum hot water temperature up to 70 C.

- IP55 防水标准;
- 流量大;
- 超静音;
- 承压能力强, 可达到 6kg/cm²;
- 316 不锈钢机轴;
- 石墨 / 碳化硅机械密封;
- 最高适用于 70°C 温泉;

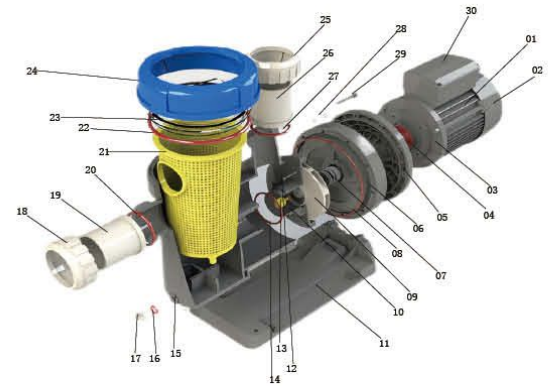
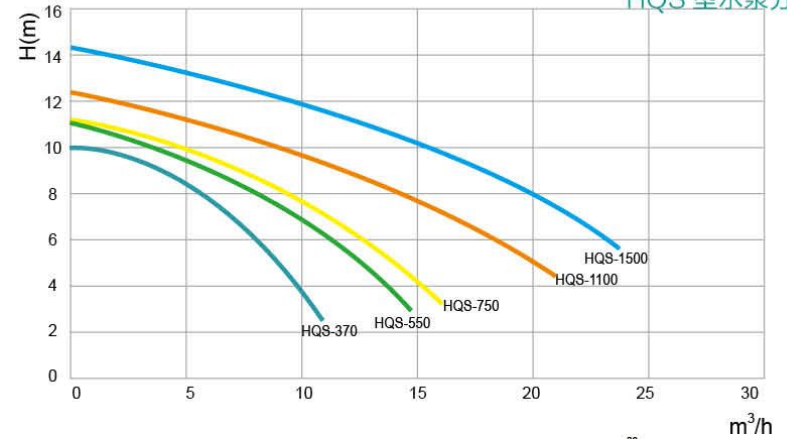
Model	Voltage	Power		Hmax (m)	Qmax (m ³ /h)	Port Size (mm)
型号	电压 (V)	KW	HP	最大扬程	最大流量	管径
HQS-370	220V 50Hz/60Hz	0.37	0.5	10	11	50 1.5"
HQS-550		0.5	0.75	10	15	
HQS-750		0.75	1.0	11	17	
HQS-1100		1.1	1.5	12	22	
HQS-1500		1.5	2.0	14	25	

以上数据仅供参考, 以每次出货产品数据为准

Above size only for reference ,pls take shipping products size as correct.

HQS Series Water Pump Technical Characteristics

HQS 型水泵分解图

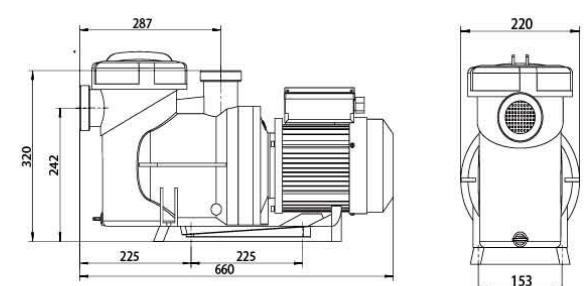


Number	Name	Number	Name	Number	Name
编号	配件名称	编号	配件名称	编号	配件名称
01	电机 Motor	11	底脚 Base	21	过滤篮 Filter Basket
02	后风罩 Ventilation Hood	12	螺丝 *2 Screw*2	22	O 型密封圈 O-ring Seal
03	电机法兰 Motor Flange	13	散热器 Diffuser	23	透明盖 Transparent Cover
04	甩水环 water deflector ring	14	O 型密封圈 O-ring Seal	24	大螺帽 Lid Lock Ring
05	法兰盖 Flange Cover	15	泵体 Pump Body	25	活接螺帽 Union Nut
06	法兰 Flange	16	O 型密封圈 O-ring Seal	26	衬套 Union Bushing
07	机械密封 Mechanical seal	17	螺栓 Bolt	27	O 型密封圈 O-ring Seal
08	O 型密封圈 O-ring Seal	18	活接螺帽 Union Nut	28	螺丝 *4 Screw*4
09	叶轮 Impeller	19	衬套 Union Bushing	29	螺丝 *10 Screw*10
10	止退螺丝 Backstop Screw	20	O 型密封圈 O-ring Seal	30	电机接线盒 Junction Box

HQ 型水泵 HQ Series Water Pump



- IP55 waterproof standard.
- Big flow rate.
- Ultra-quiet.
- Maximum working pres-sure up to 6kg/cm².
- 316 stainless steel shaft.
- Graphite/ceramic mechanical seal.
- Suitable for maximum hot water* temperature up to 70 C.



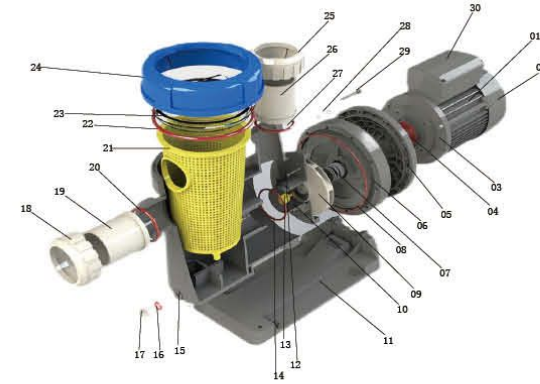
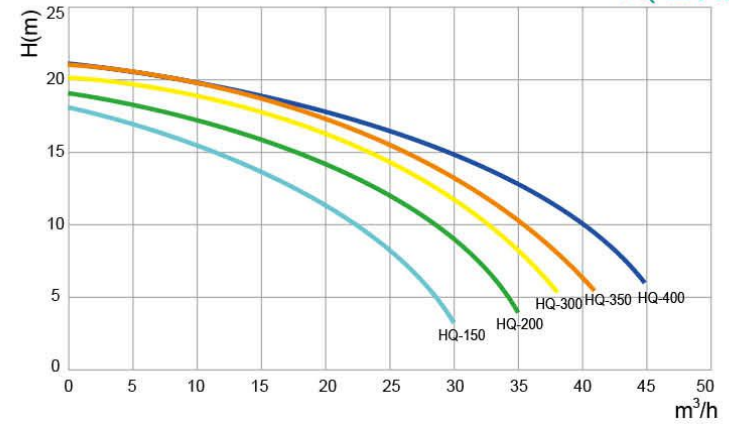
- IP55 防水标准;
- 流量大;
- 超静音;
- 承压能力强, 可达到 6kg/cm²;
- 316 不锈钢机轴;
- 石墨 / 碳化硅机械密封;
- 最高适用于 70°C 温泉;

Model	Voltage	Power	Hmax (m)	Qmax (m ³ /h)	Port Size (mm)
型号	电压 (V)	KW	最大扬程	最大流量	管径
HQ-150	220V/380V 50Hz/60Hz	1.1	1.5	18	30
HQ-200		1.5	2.0	19	35
HQ-300	380V 50Hz/60Hz	2.2	3.0	20	38
HQ-350		2.6	3.5	21	41
HQ-400		3.0	4.0	21	45

以上数据仅供参考, 以每次出货产品数据为准
Above size only for reference ,pls take shipping products size as correct.

HQ Series Water Pump Technical Characteristics

HQ 型水泵分解图

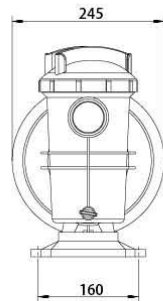
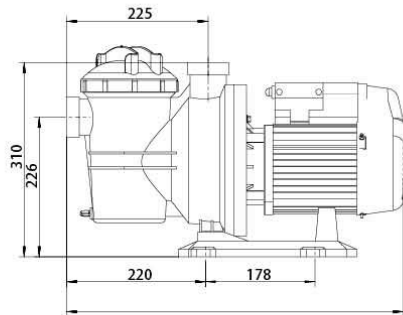


Number	Name	Number	Name	Number	Name
编号	配件名称	编号	配件名称	编号	配件名称
01	电机 Motor	11	底脚 Base	21	过滤篮 Filter Basket
02	后风罩 Ventilation Hood	12	螺丝 *2 Screw*2	22	O 型密封圈 O-ring Seal
03	电机法兰 Motor Flange	13	散水器 Diffuser	23	透明盖 Transparent Cover
04	甩水环 water deflector ring	14	O 型密封圈 O-ring Seal	24	大螺帽 Lid Lock Ring
05	法兰盖 Flange Cover	15	泵体 Pump Body	25	活接螺帽 Union Nut
06	法兰 Flange	16	O 型密封圈 O-ring Seal	26	衬套 Union Bushing
07	机械密封 Mechanical seal	17	螺栓 Bolt	27	O 型密封圈 O-ring Seal
08	O 型密封圈 O-ring Seal	18	活接螺帽 Union Nut	28	螺丝 *4 Screw*4
09	叶轮 Impeller	19	衬套 Union Bushing	29	螺丝 *10 Screw*10
10	止退螺丝 Backstop Screw	20	O 型密封圈 O-ring Seal	30	电机接线盒 Junction Box

HLB 型水泵 HLB Series Water Pump



- IP55 waterproof standard.
- Big flow rate.
- Ultra-quiet.
- Maximum working pres-sure up to 6kg/cm².
- 316 stainless steel shaft.
- Graphite/ceramic mechanical seal.
- Suitable for maximum hot water* temperature up to 70 C.



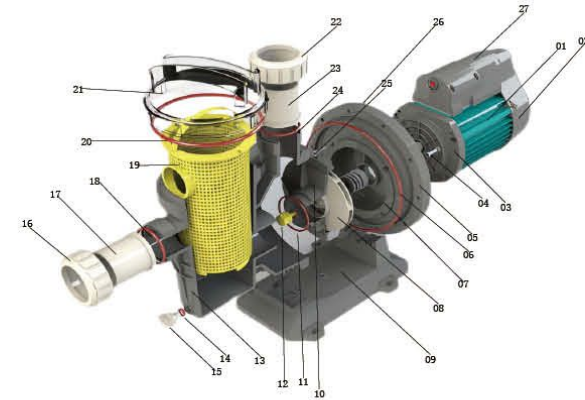
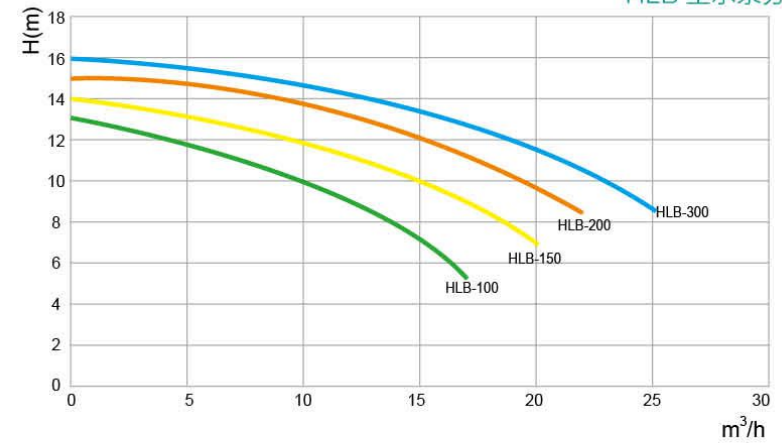
- IP55 防水标准;
- 流量大;
- 超静音;
- 承压能力强, 可达到 6kg/cm²;
- 316 不锈钢机轴;
- 石墨 / 碳化硅机械密封;
- 最高适用于 70°C 温泉;

Model	Voltage	Power		Hmax (m)	Qmax (m ³ /h)	Port Size (mm)
型号	电压 (V)	KW	HP	最大扬程	最大流量	管径
HLB-100	220V 50Hz/60Hz	0.75	1.0	13	17	50 1.5"
HLB-150		1.1	1.5	14	20	
HLB-200		1.5	2.0	15	22	
HLB-300		2.2	3.0	15	25	

以上数据仅供参考, 以每次出货产品数据为准
Above size only for reference ,pls take shipping products size as correct.

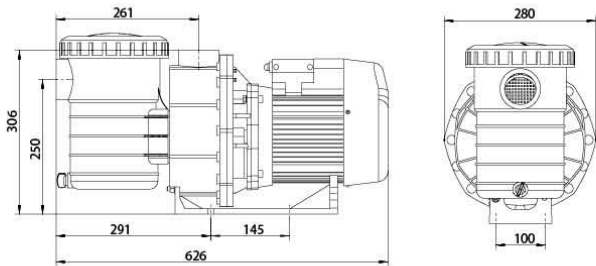
HLB Series Water Pump Technical Characteristics

HLB 型水泵分解图



Number	Name	Number	Name	Number	Name
编号	配件名称	编号	配件名称	编号	配件名称
01	电机	11	O 型密封圈	21	透明盖
02	后风罩	12	止退螺丝	22	活接螺帽
03	电机法兰	13	泵体	23	衬套
04	螺丝 *3	14	O 型密封圈	24	O 型密封圈
05	法兰	15	螺栓	25	螺丝 *4
06	O 型密封圈	16	活接螺帽	26	螺丝 *10
07	机械密封	17	衬套		
08	叶轮	18	O 型密封圈	27	电机接线盒
09	底座	19	过滤篮		
10	甩水器	20	O 型密封圈		

HL 型水泵 HL Series Water Pump



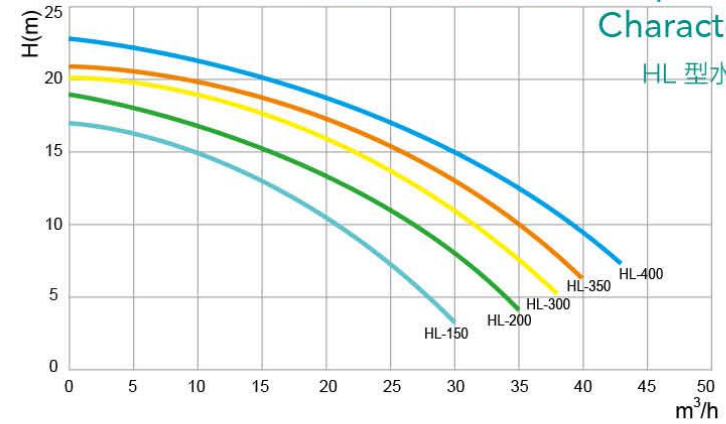
- IP55 waterproof standard.
- Big flow rate.
- Ultra-quiet.
- Maximum working pressure up to 6kg/cm².
- 316 stainless steel shaft.
- Graphite/ceramic mechanical seal.
- Suitable for maximum hot water[®].
- temperature up to 70 C.

- IP55 防水标准;
- 流量大;
- 超静音;
- 承压能力强, 可达到 6kg/cm²;
- 316 不锈钢机轴;
- 石墨 / 碳化硅机械密封;
- 最高适用于 70°C 温泉;

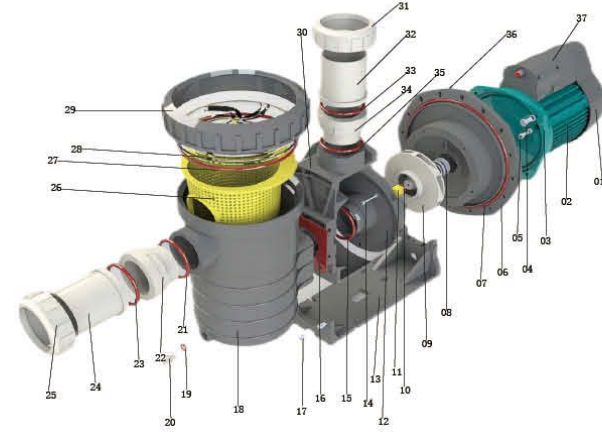
Model	Voltage	Power	Hmax (m)	Qmax (m ³ /h)	Port Size (mm)
型号	电压 (V)	KW HP	最大扬程	最大流量	管径
HL-150	220V/380V 50Hz/60Hz	1.1 1.5	18	30	63 2"
HL-200		1.5 2.0	19	35	
HL-300		2.2 3.0	20	38	
HL-350		2.6 3.5	21	40	
HL-400		3.0 4.0	22	43	

以上数据仅供参考, 以每次出货产品数据为准
Above size only for reference ,pls take shipping products size as correct.

HL Series Water Pump Technical Characteristics



HL 型水泵分解图

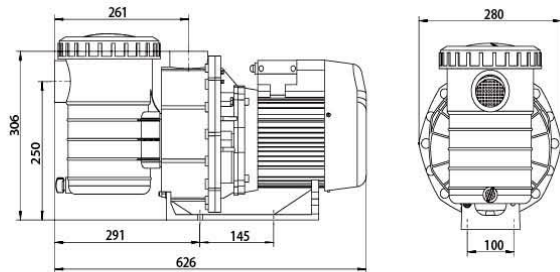


Number	Name	Number	Name	Number	Name
编号	配件名称	编号	配件名称	编号	配件名称
01	后风罩 Ventilation Hood	14	螺丝*5 Screw*5	27	O型密封圈 O-ring Seal
02	电机 Motor	15	O型密封圈 O-ring Seal	28	透明盖 Transparent Cover
03	电机法兰 Motor Flange	16	密封垫 Seal	29	大螺帽 Lid Lock Ring
04	螺丝*4 Screw*4	17	螺帽 NUT	30	泵体 Pump Body
05	螺丝*3 Screw*3	18	泵体 Pump Body	31	活接螺帽 Union Nut
06	法兰 Flange	19	O型密封圈 O-ring Seal	32	衬套 Union Bushing
07	O型密封圈 O-ring Seal	20	螺栓 Bolt	33	O型密封圈 O-ring Seal
08	机械密封 Mechanical seal	21	O型密封圈 O-ring Seal	34	活接 Union
09	叶轮 Impeller	22	活接 Union	35	O型密封圈 O-ring Seal
10	O型密封圈 O-ring Seal	23	O型密封圈 O-ring Seal	36	螺丝*16 Screw*16
11	止退螺丝 Backstop Screw	24	衬套 Union Bushing	37	电机接线盒 Junction Box
12	散水器 diffuser	25	活接螺帽 Union Nut		
13	底脚 Base	26	过滤篮 Filter Basket		

HLA 型水泵 HLA Series Water Pump



- IP55 waterproof standard.
- Big flow rate.
- Ultra-quiet.
- Maximum working pres-sure up to 6kg/cm^2 .
- 316 stainless steel shaft.
- Graphite/ceramic mechanical seal.
- Suitable for maximum hot water[®].
- temperature up to 70 C.



- IP55 防水标准;
- 流量大;
- 超静音;
- 承压能力强, 可达到 6kg/cm^2 ;
- 316 不锈钢机轴;
- 石墨 / 碳化硅机械密封;
- 最高适用于 70°C 温泉;

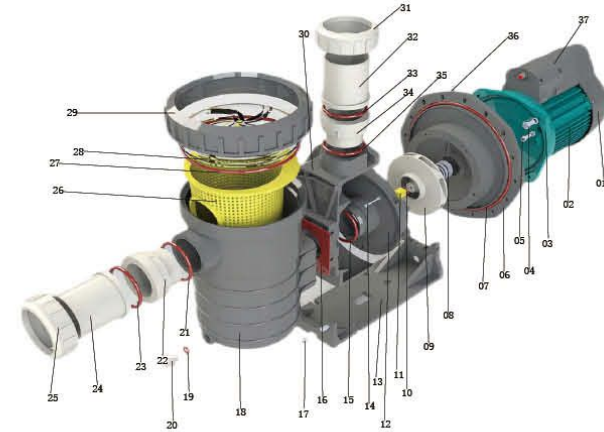
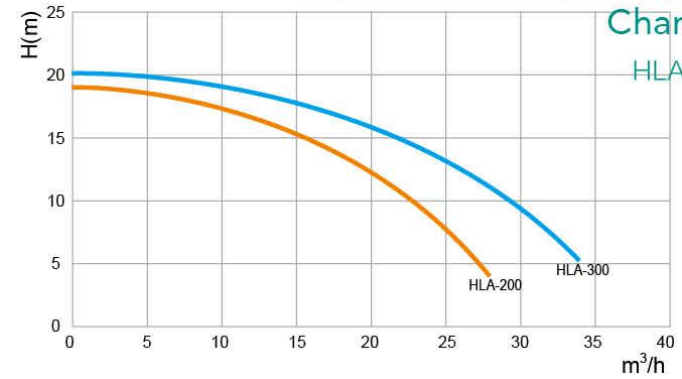
Model	Voltage	Power	Hmax (m)	Qmax (m ³ /h)	Port Size (mm)	
型号	电压 (V)	KW	HP	最大扬程	最大流量	管径
HLA-200	220V	1.5	2.0	19	28	63 2"
HLA-300	50Hz/60Hz	2.2	3.0	20	34	

以上数据仅供参考, 以每次出货产品数据为准

Above size only for reference ,pls take shipping products size as correct.

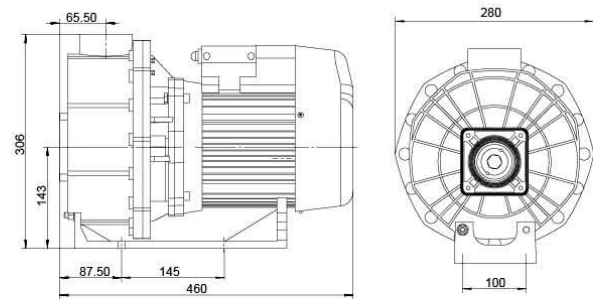
HLA Series Water Pump Technical Characteristics

HLA 型水泵分解图



Number	Name	Number	Name	Number	Name
编号	配件名称	编号	配件名称	编号	配件名称
01	后风罩 Ventilation Hood	14	螺丝 *5 Screw*5	27	O 型密封圈 O-ring Seal
02	电机 Motor	15	O 型密封圈 O-ring Seal	28	透明盖 Transparent Cover
03	电机法兰 Motor Flange	16	密封垫 Seal	29	大螺帽 Lid Lock Ring
04	螺丝 *4 Screw*4	17	螺帽 NUT	30	泵体 Pump Body
05	螺丝 *3 Screw*3	18	泵体 Pump Body	31	活接螺帽 Union Nut
06	法兰 Flange	19	O 型密封圈 O-ring Seal	32	衬套 Union Bushing
07	O 型密封圈 O-ring Seal	20	螺栓 Bolt	33	O 型密封圈 O-ring Seal
08	机械密封 Mechanical seal	21	O 型密封圈 O-ring Seal	34	活接 Union
09	叶轮 Impeller	22	活接 Union	35	O 型密封圈 O-ring Seal
10	O 型密封圈 O-ring Seal	23	O 型密封圈 O-ring Seal	36	螺丝 *16 Screw*16
11	止退螺丝 Backstop Screw	24	衬套 Union Bushing	37	电机接线盒 Junction Box
12	散水器 diffuser	25	活接螺帽 Union Nut		
13	底脚 Base	26	过滤篮 Filter Basket		

HLD 型水泵 HLD Series Water Pump



- IP55 waterproof standard.
- Big flow rate.
- Ultra-quiet.
- Maximum working pres-sure up to 6kg/cm².
- 316 stainless steel shaft.
- Graphite/ceramic mechanical seal.
- Suitable for maximum hot water[®].
- temperature up to 70 C.

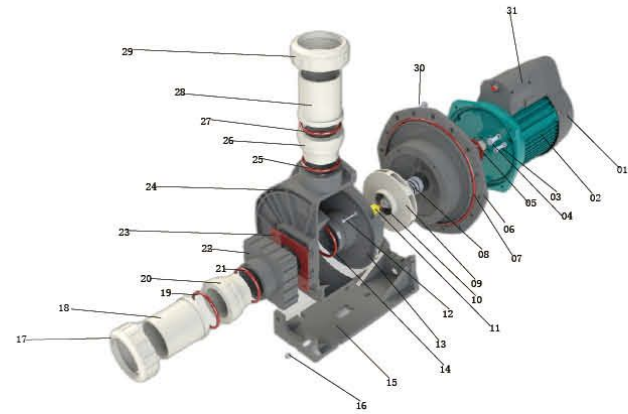
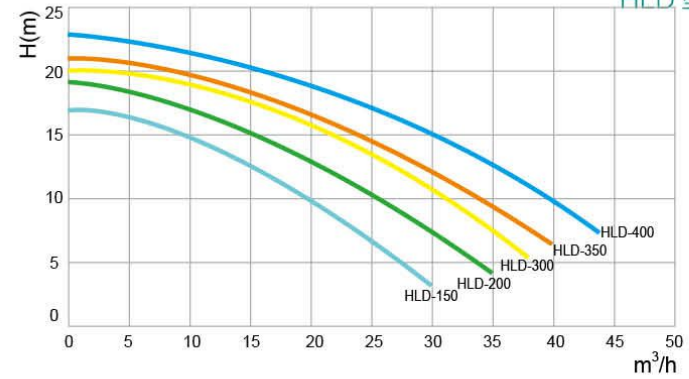
- IP55 防水标准;
- 流量大;
- 超静音;
- 承压能力强, 可达到 6kg/cm²;
- 316 不锈钢机轴;
- 石墨 / 碳化硅机械密封;
- 最高适用于 70°C 温泉;

Model	Voltage	Power	Hmax (m)	Qmax (m ³ /h)	Port Size (mm)	
型号	电压 (V)	KW	HP	最大扬程	最大流量	管径
HLD-150	220V/50Hz	1.1	1.5	18	30	63 2"
HLD-200		1.5	2.0	19	35	
HLD-300	220V/380V/50Hz	2.2	3.0	20	38	
HLD-350		2.6	3.5	21	40	
HLD-400	380V/50Hz	3.0	4.0	22	48	

以上数据仅供参考, 以每次出货产品数据为准
Above size only for reference ,pls take shipping products size as correct.

HLD Series Water Pump Technical Characteristics

HLD 型水泵分解图

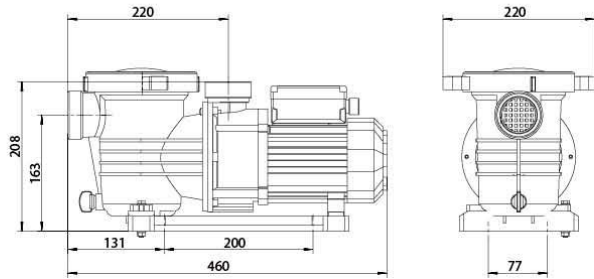


Number	Name	Number	Name	Number	Name
编号	配件名称	编号	配件名称	编号	配件名称
01	后风罩 Ventilation Hood	11	止退螺丝 Backstop Screw	21	O 型密封圈 O-ring Seal
02	电机 Motor	12	螺丝 *5 Screw*5	22	泵头 Pump head
03	螺丝 *3 Screw*3	13	散水器 diffuser	23	密封垫 seal
04	螺丝 *4 Screw*4	14	O 型密封圈 O-ring Seal	24	桶体 Filter VAT
05	甩水环 water deflector ring	15	底脚 Base	25	O 型密封圈 O-ring Seal
06	法兰 Flange	16	螺丝 *2 Screw*2	26	活接 Union
07	O 型密封圈 O-ring Seal	17	活接螺帽 Union Nut	27	O 型密封圈 O-ring Seal
08	机械密封 Mechanical seal	18	衬套 Union Bushing	28	衬套 Union Bushing
09	叶轮 Impeller	19	O 型密封圈 O-ring Seal	29	活接螺帽 Union Nut
10	O 型密封圈 O-ring Seal	20	活接 Union	30	螺丝 *16 Screw*16
				31	电机接线盒 Junction Box

ELS 型水泵 ELS Series Water Pump



- IP55 waterproof standard.
- Big flow rate.
- Ultra-quiet.
- Maximum working pres-sure up to 6kg/cm².
- 316 stainless steel shaft.
- Graphite/ceramic mechanical seal.
- Suitable for maximum hot water[®].
- temperature up to 70 C.

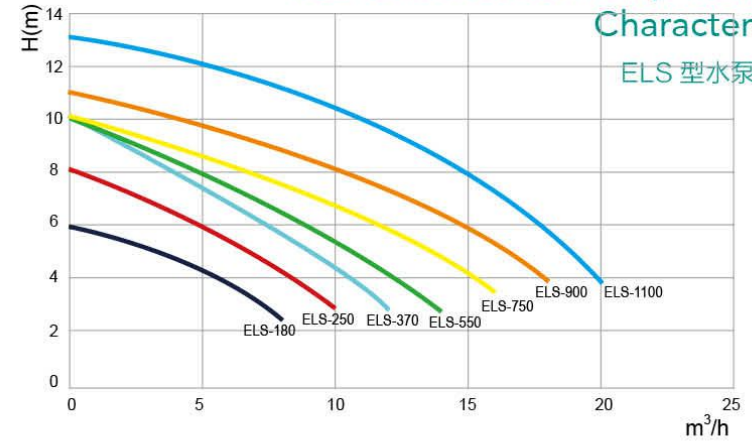


- IP55 防水标准;
- 流量大;
- 超静音;
- 承压能力强, 可达到 6kg/cm²;
- 316 不锈钢机轴;
- 石墨 / 碳化硅机械密封;
- 最高适用于 70°C 温泉;

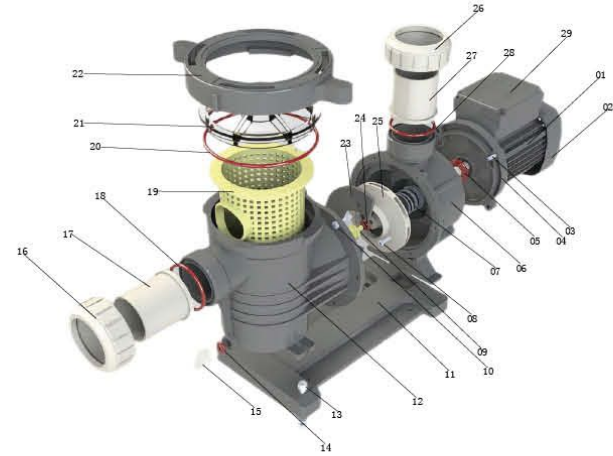
Model	Voltage	Power		Hmax (m)	Qmax (m ³ /h)	Port Size (mm)
型号	电压 (V)	KW	HP	最大扬程	最大流量	管径
ELS-180	220V/50Hz/60Hz	0.18	0.25	6	8	50 1.5"
ELS-250		0.25	0.35	8	10	
ELS-370		0.37	0.5	10	12	
ELS-550		0.55	0.75	10	14	
ELS-750		0.75	1.0	10	16	
ELS-900		0.9	1.2	13	18	
ELS-1000		1.1	1.5	13	20	

以上数据仅供参考, 以每次出货产品数据为准
Above size only for reference ,pls take shipping products size as correct.

ELS Series Water Pump Technical Characteristics



ELS 型水泵分解图



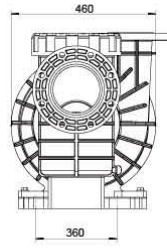
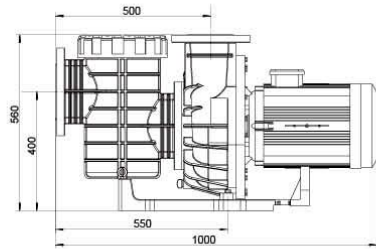
Number	Name	Number	Name	Number	Name
编号	配件名称	编号	配件名称	编号	配件名称
01	电机 Motor	11	底座 Base	21	透明盖 Transparent Cover
02	后风罩 Ventilation Hood	12	桶体 Filter VAT	22	大螺帽 Lid Lock Ring
03	螺丝 *4 Screw*4	13	螺丝 *2 Screw*2	23	内衬板 Liner
04	电机法兰 Motor Flange	14	O 型密封圈 O-ring Seal	24	O 型密封圈 O-ring Seal
05	O 型密封圈 O-ring Seal	15	螺栓 Bolt	25	叶轮 Impeller
06	泵体 Pump Body	16	活接螺母 Union Nut	26	活接螺母 Union Nut
07	机械密封 Mechanical seal	17	衬套 Union Bushing	27	衬套 Union Bushing
08	螺丝 *4 Screw*4	18	O 型密封圈 O-ring Seal	28	O 型密封圈 O-ring Seal
09	止退螺丝 Backstop Screw	19	过滤篮 Filter Basket	29	电机接线盒 Junction Box
10	螺丝 *6 Screw*6	20	O 型密封圈 O-ring Seal		

SUP 大功率塑料水泵

SUP High Power Plastic Water Pump



- A new generation of silent water pump.
- Big flow rate.
- Ultra-quiet: (1450rpm)
- Maximum working pressure up to 6kg/cm^2 .
- Energy saving and power saving.
- IP55 waterproof standard.
- Graphite/ceramic mechanical seal.
- Suitable for maximum hot water temperature up to 70°C .
- Suitable for aquariums, water parks, hot spring spas, etc.



- 新一代静音型水泵;
- 流量大;
- 超静音 (1450 转);
- 承压能力强, 可达到 6kg/cm^2 ;
- 节能省电;
- IP55 防水标准;
- 最高适用于 70°C 温泉;
- 特殊密封结构及材料配置;
- 适用与海洋馆、水上乐园、温泉水疗等;

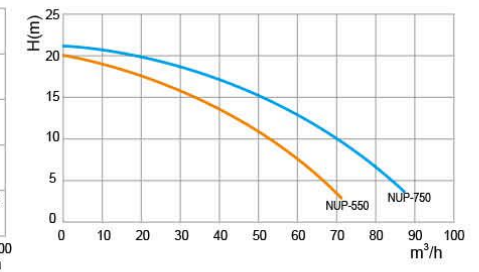
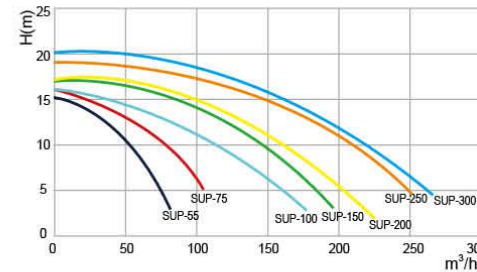
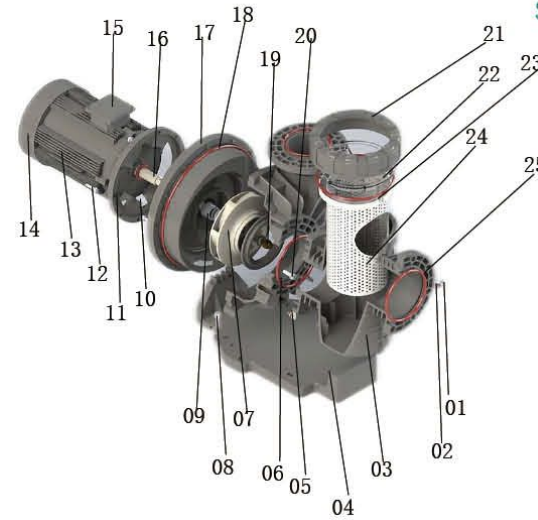
Model	Voltage	Power		Hmax (m)	Qmax (m ³ /h)	Port Size (mm)	Speed (r/min)
型号	电压 (V)	KW	HP	最大扬程	最大流量	管径	转速
NUP-550	380V 50Hz/60Hz	4.0	5.5	20	72	Inlet:100 Outlet:80	1450
NUP-750		5.5	7.5	21	88		2850
SUP-55		4.0	5.5	16	83	Inlet:150 Outlet:125	1450
SUP-75		5.5	7.5	17	106		
SUP-100		7.5	10	16	180		
SUP-150		11	15	17	200		
SUP-200		15	20	18	220		
SUP-250		18.5	25	18	240		
SUP-300	22	30	18	271			

以上数据仅供参考, 以每次出货产品数据为准

Above size only for reference ,pls take shipping products size as correct.

SUP High Power Plastic Water Pump Technical Characteristics

SUP 大功率塑料水泵分解图



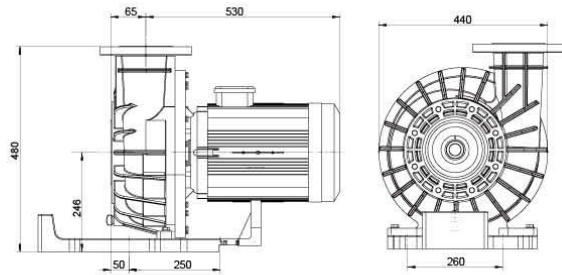
Number	Name	Number	Name	Number	Name
编号	配件名称	编号	配件名称	编号	配件名称
01	螺栓 Bolt	11	电机法兰 Motor Flange	21	大螺帽 Lid Lock Ring
02	O型密封圈 O-ring Seal	12	螺丝*4 Screw*4	22	透明盖 Transparent Cover
03	泵体 Pump Body	13	电机 Motor	23	O型密封圈 O-ring Seal
04	底座 Base	14	后风罩 Ventilation Hood	24	过滤篮 Filter Basket
05	螺栓 Bolt	15	电机接线盒 Junction Box	25	O型密封圈 O-ring Seal
06	O型密封圈 O-ring Seal	16	电机轴 Motor shaft		
07	叶轮 Impeller	17	法兰 Flange		
08	螺丝*2 Screw*2	18	O型密封圈 O-ring Seal		
09	机械密封 Mechanical seal	19	螺母 NUT		
10	甩水环 water deflector ring	20	螺丝*8 Screw*8		

SUP1 大功率塑料水泵

SUP1 High Power Plastic Water Pump



- A new generation of silent water pump.
- Big flow rate.
- Ultra-quiet. (1450rpm)
- Maximum working pressure up to 6kg/cm².
- Energy saving and power saving.
- IP55 waterproof standard.
- Graphite/ceramic mechanical seal.
- Suitable for maximum hot water temperature up to 70°C.
- Suitable for aquariums, water parks, hot spring spas, etc.



- 新一代静音水泵;
- 流量大;
- 超静音 (1450 转);
- 承压能力强, 可达到 6kg/cm²;
- 节能省电;
- IP55 防水标准;
- 最高适用于 70°C 温泉;
- 特殊密封结构及材料配置;
- 适用与海洋馆、水上乐园、温泉水疗等;

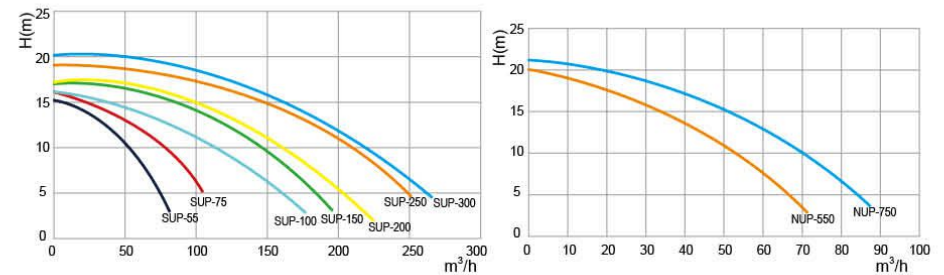
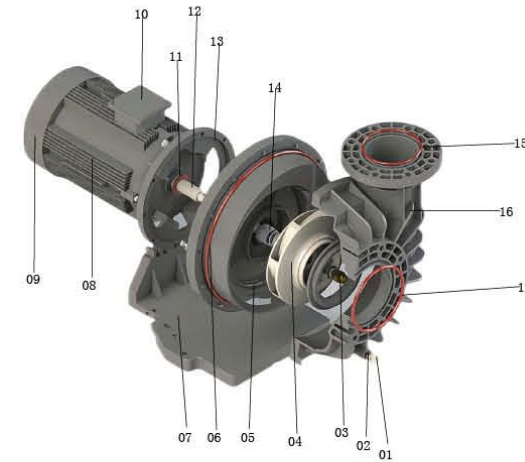
Model	Voltage	Power		H _{max} (m)	Q _{max} (m ³ /h)	Port Size (mm)	Speed (r/min)
型号	电压 (V)	KW	HP	最大扬程	最大流量	管径	转速
NUP1-550	380V 50Hz/60Hz	4.0	5.5	20	72	Inlet:100 Outlet:80	1450
NUP1-750		5.5	7.5	21	88		
SUP1-55		4.0	5.5	16	83	Inlet:150 Outlet:125	1450
SUP1-75		5.5	7.5	17	106		
SUP1-100		7.5	10	16	180		
SUP1-150		11	15	17	200		
SUP1-200		15	20	18	220		
SUP1-250		18.5	25	18	240		
SUP1-300		22	30	18	271		

以上数据仅供参考, 以每次出货产品数据为准

Above size only for reference ,pls take shipping products size as correct.

SUP1 High Power Plastic Water Pump Technical Characteristics

SUP1 大功率塑料水泵分解图



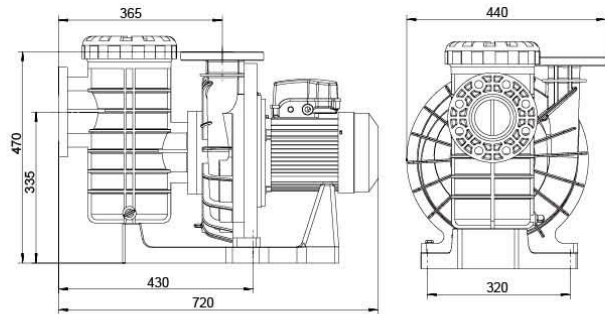
Number	Name	Number	Name	Number	Name
编号	配件名称	编号	配件名称	编号	配件名称
01	螺栓 Bolt	07	底脚 Base	13	电机法兰 Motor Flange
02	O型密封圈 O-ring Seal	08	电机 Motor	14	机械密封 Mechanical seal
03	螺母 NUT	09	后风罩 Ventilation Hood	15	O型密封圈 O-ring Seal
04	叶轮 Impeller	10	电机接线盒 Junction Box	16	泵体 Pump Body
05	法兰 Flange	11	甩水环 water deflector ring	17	O型密封圈 O-ring Seal
06	O型密封圈 O-ring Seal	12	电机轴 Motor shaft		

SUN 大功率塑料水泵

SUN High Power Plastic Water Pump



- A new generation of silent water pump.
- Big flow rate.
- Ultra-quiet. (1450rpm)
- Maximum working pressure up to 6kg/cm^2 .
- Energy saving and power saving.
- IP55 waterproof standard.
- Graphite/ceramic mechanical seal.
- Suitable for maximum hot water temperature up to 70°C .
- Suitable for aquariums, water parks, hot spring spas, etc.



- 新一代静音型水泵；
- 流量大；
- 超静音（1450转）；
- 承压能力强，可达到 6kg/cm^2 ；
- 节能省电；
- IP55 防水标准；
- 最高适用于 70°C 温泉；
- 特殊密封结构及材料配置；
- 适用与海洋馆、水上乐园、温泉水疗等；

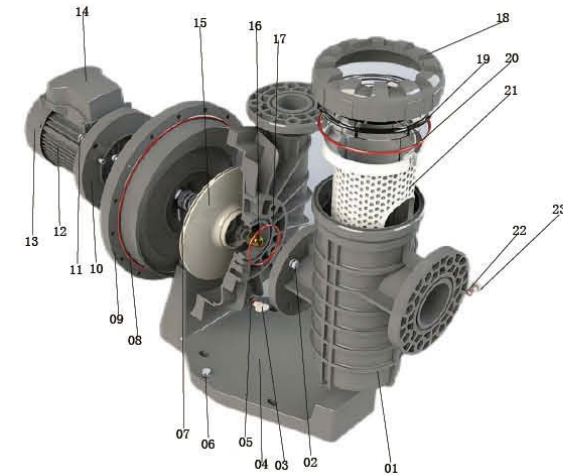
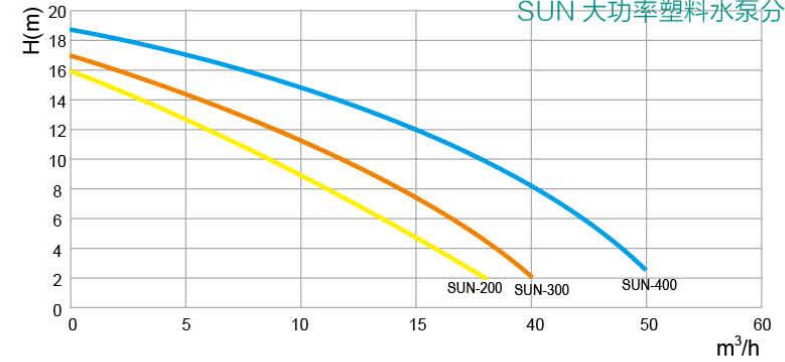
Model	Voltage	Power		Hmax (m)	Qmax (m ³ /h)	Port Size (mm)	Speed (r/min)
型号	电压 (V)	KW	HP	最大扬程	最大流量	管径	转速
SUN-200	380V 50Hz/60Hz	1.5	2.0	16	36	Inlet:80 Outlet:63	1450
SUN-300		2.2	3.0	17	40		
SUN-400	3.0	4.0	19	50			

以上数据仅供参考，以每次出货产品数据为准

Above size only for reference ,pls take shipping products size as correct.

SUN High Power Plastic Water Pump Technical Characteristics

SUN 大功率塑料水泵分解图

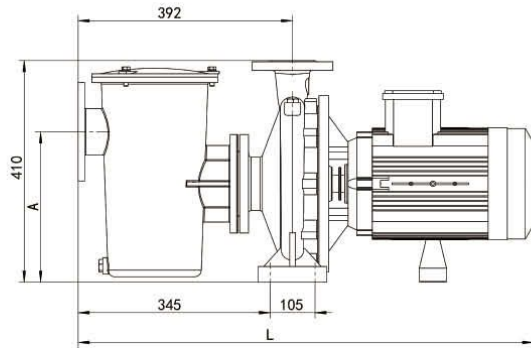


Number	Name	Number	Name	Number	Name
编号	配件名称	编号	配件名称	编号	配件名称
01	泵体 Pump Body	09	法兰 Flange	17	O型密封圈 O-ring Seal
02	螺丝 *4 Screw*4	10	电机法兰 Motor Flange	18	大螺帽 Lid Lock Ring
03	螺栓 Bolt	11	螺丝 *4 Screw*4	19	透明盖 Transparent Cover
04	底脚 Base	12	电机 Motor	20	O型密封圈 O-ring Seal
05	O型密封圈 O-ring Seal	13	后风罩 Ventilation Hood	21	过滤篮 Filter Basket
06	螺丝 *2 Screw*2	14	电机接线盒 Junction Box	22	O型密封圈 O-ring Seal
07	机械密封 Mechanical seal	15	叶轮 Impeller	23	螺栓 Bolt
08	O型密封圈 O-ring Seal	16	螺母 NUT		

FD 系列铸铁泵 FD Series Cast Iron Water Pump



- IP55 waterproof standard.
- Big flow rate.
- Ultra-quiet.
- Maximum working pres-sure up to 6kg/cm².
- 316 stainless steel shaft.
- Graphite/ceramic mechanical seal.
- Suitable for maximum hot water^a.
- temperature up to 70 C.



- IP55 防水标准;
- 流量大;
- 超静音;
- 承压能力强, 可达到 6kg/cm²;
- 316 不锈钢机轴;
- 石墨 / 碳化硅机械密封;
- 最高适用于 70°C 温泉;

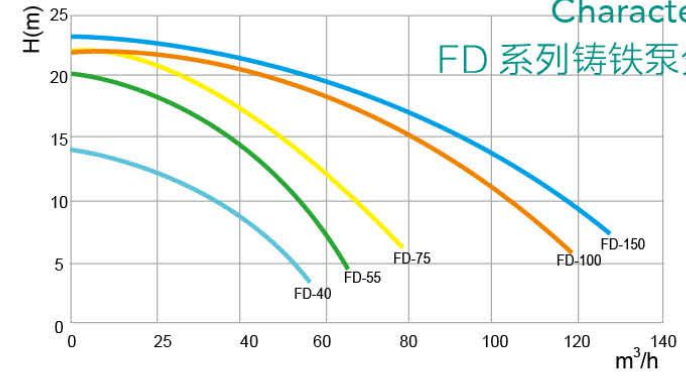
Model	Voltage (V)	Power	Hmax (m)	Qmax (m ³ /h)	Motor Speed (r/min)	Port Size (mm)	Inlet Pipe Flange (mm)	Outlet Pipe Diameter (mm)	Outlet Pipe Flange (mm)
型号	电压	KW HP	最大扬程	最大流量	电机转速	进/出口口径	进水口法兰	出水口径	出水口法兰
FD-40	380V/50Hz	3.0 4.0	14	57	1450	Φ80	4-Φ12 Φ90	Φ63	4-Φ18 Φ75
FD-55		4.0 5.5	20	66					
FD-75		5.5 7.5	22	79					
FD-100		7.5 10	22	120		Φ100	8-Φ18 Φ110	Φ80	4-Φ18 Φ90
FD-150		11 15	23	129					

以上数据仅供参考, 以每次出货产品数据为准

Above size only for reference ,pls take shipping products size as correct.

FD Exploded View Of Series Cast Iron Water Pump

Characteristics FD 系列铸铁泵分解图

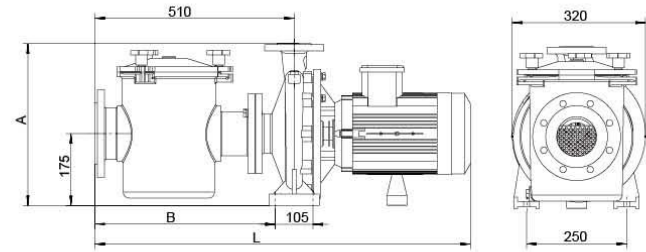


Number	Name	Number	Name	Number	Name
编号	配件名称	编号	配件名称	编号	配件名称
01	桶体盖 Filter VAT cover	09	螺塞 PLUG	17	后风罩 Ventilation Hood
02	O型密封圈 O-ring Seal	10	O型密封圈 O-ring Seal	18	螺丝 *10 Screw*10
03	过滤篮 Filter Basket	11	泵体 Pump Body	19	电机接线盒 Junction Box
04	桶体 Filter VAT	12	叶轮 Impeller	20	甩水环 water deflector ring
05	O型密封圈 O-ring Seal	13	O型密封圈 O-ring Seal	21	垫圈 gasket
06	螺塞 PLUG	14	法兰 Flange	22	弹性垫圈 elastic gasket
07	螺丝 *4 Screw*4	15	螺丝 *4 Screw*4	23	螺母 NUT
08	密封圈 Seal	16	电机 Motor	24	螺丝 *3 Screw*3

FDU 系列铸铁泵 FDU Series Cast Iron Water Pump



- IP55 waterproof standard.
- Big flow rate.
- Ultra-quiet.
- Maximum working pres-sure up to 6kg/cm².
- 316 stainless steel shaft.
- Graphite/ceramic mechanical seal.
- Suitable for maximum hot water^o.
- temperature up to 70 C.



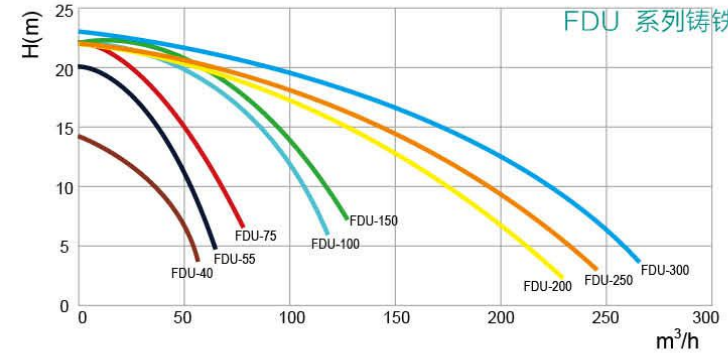
- IP55 防水标准;
- 流量大;
- 超静音;
- 承压能力强, 可达到 6kg/cm²;
- 316 不锈钢机轴;
- 石墨 / 碳化硅机械密封;
- 最高适用于 70°C 温泉;

Model	Voltage (V)	Power	Hmax (m)	Qmax (m ³ /h)	Motor Speed (r/min)	Port Size (mm)	Inlet Pipe Flange (mm)	Outlet Pipe Diameter (mm)	Outlet Pipe Flange (mm)		
型号	电压	KW HP	最大扬程	最大流量	电机转速	进/出水口径	进水口法兰	出水口径	出水口法兰		
FDU-40	380V/50Hz	3.0 4.0	14	48	1450	Φ100	8-Φ18 Φ110	Φ63	4-Φ18 Φ75		
FDU-55		4.0 5.5	20	66				Φ80	4-Φ18 Φ90		
FDU-75		5.5 7.5	22	79				Φ125	Φ140	Φ100	4-Φ18 Φ110
FDU-100		7.5 10	22	120				Φ150	Φ160	Φ125	4-Φ18 Φ140
FDU-150		11 15	23	129		Φ125	Φ140	Φ100	4-Φ18 Φ90		
FDU-200		15 20	23	180							
FDU-250		18.5 25	23	190							
FDU-300		22 30	23	220							

以上数据仅供参考, 以每次出货产品数据为准

Above size only for reference ,pls take shipping products size as correct.

FDU Exploded View Of Series Cast Iron Water Pump Characteristics



FDU 系列铸铁泵分解图

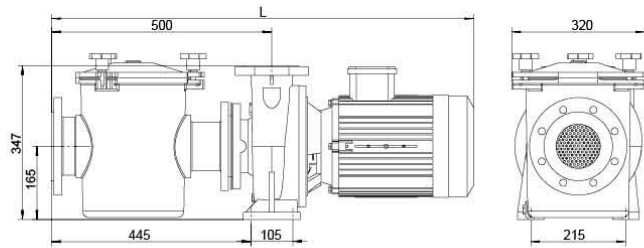


Number	Name	Number	Name	Number	Name
编号	配件名称	编号	配件名称	编号	配件名称
01	后风罩 Ventilation Hood	09	垫圈 Gasket	17	O 型密封圈 O-ring Seal
02	电机 Motor	10	弹性垫圈 Elastic gasket	18	桶体盖 Filter VAT cover
03	螺丝 *10 Screw*10	11	螺母 NUT	19	梅花螺帽 Torx nut
04	螺丝 *4 Screw*4	12	泵体 Pump Body	20	垫片 gasket
05	O 型密封圈 O-ring Seal	13	密封圈 Seal	21	螺帽 NUT
06	法兰 Flange	14	螺丝 *10 Screw*10	22	O 型密封圈 O-ring Seal
07	机械密封 Mechanical seal	15	桶体 Filter VAT	23	电机接线盒 Junction Box
08	叶轮 Impeller	16	过滤篮 Filter Basket		

FU 系列铸铁泵 FU Series Cast Iron Water Pump



- IP55 waterproof standard.
- Big flow rate.
- Ultra-quiet.
- Maximum working pres-sure up to 6kg/cm².
- 316 stainless steel shaft.
- Graphite/ceramic mechanical seal.
- Suitable for maximum hot water^o.
- temperature up to 70 C.



- IP55 防水标准;
- 流量大;
- 超静音;
- 承压能力强, 可达到 6kg/cm²;
- 316 不锈钢机轴;
- 石墨 / 碳化硅机械密封;
- 最高适用于 70°C 温泉;

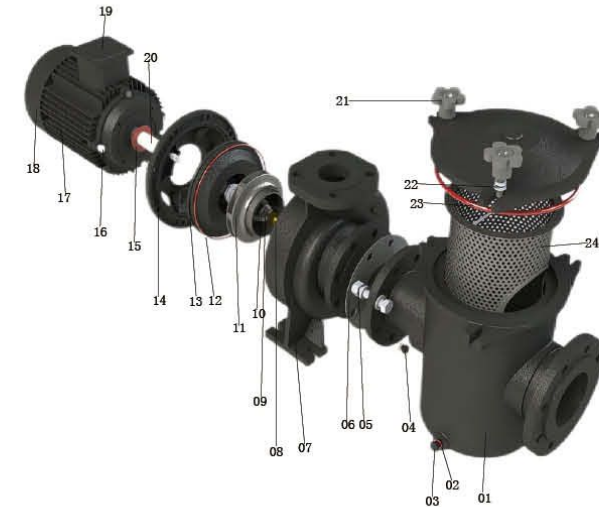
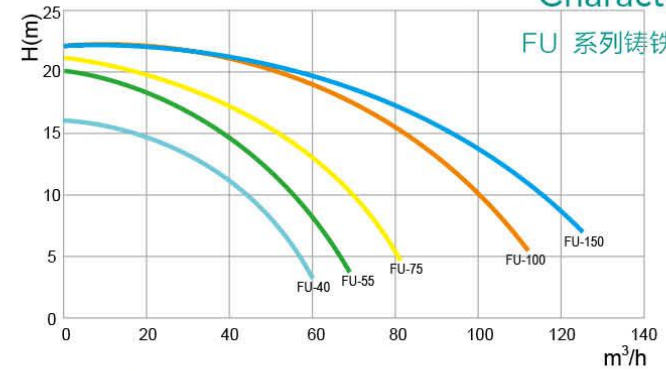
Model	Voltage (V)	Power	Hmax (m)	Qmax (m ³ /h)	Motor Speed (r/min)	Port Size (mm)	Inlet Pipe Flange (mm)	Outlet Pipe Diameter (mm)	Outlet Pipe Flange (mm)	
型号	电压	KW	HP	最大扬程	最大流量	电机转速	进/出水口径	进水口法兰	出水口径	出水口法兰
FU-40	380V/50Hz	3.0	4.0	16	60	2880	Φ100	4-Φ18 Φ110	Φ63	4-Φ18 Φ75
FU-55		4.0	5.5	20	69					
FU-75		5.5	7.5	21	82					
FU-100		7.5	10	23	113					
FU-150		11	15	23	125					

以上数据仅供参考, 以每次出货产品数据为准

Above size only for reference ,pls take shipping products size as correct.

FU Exploded View Of Series Cast Iron Water Pump Characteristics

FU 系列铸铁泵分解图

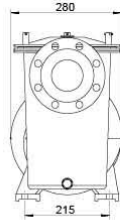
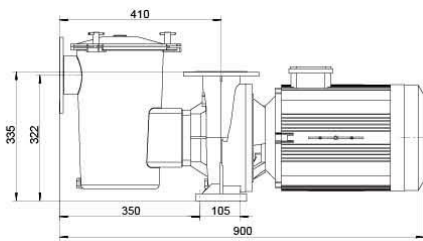


Number	Name	Number	Name	Number	Name			
编号	配件名称	编号	配件名称	编号	配件名称			
01	桶体	Filter VAT	09	弹性垫圈	Elastic gasket	17	电机	Motor
02	O 型密封圈	O-ring Seal	10	垫圈	Gasket	18	后风罩	Ventilation Hood
03	螺塞	PLUG	11	叶轮	Impeller	19	电机接线盒	Motor Box
04	螺塞	PLUG	12	法兰	Flange	20	电机轴	Motor shaft
05	螺丝 *8	Screw*8	13	O 型密封圈	O-ring Seal	21	梅花螺帽	Torx nut
06	密封圈	Seal	14	法兰盖	Flange Cover	22	垫片	gasket
07	泵体	Pump Body	15	甩水环	water deflector ring	23	O 型密封圈	O-ring Seal
08	螺母	NUT	16	螺丝 *4	Screw*4	24	过滤篮	Filter Basket

CUD 不锈钢水泵 CUD Series Stainless Steel Water Pump



- IP55 waterproof standard.
- Big flow rate.
- Ultra-quiet.
- Maximum working pressure up to 6kg/cm².
- 316 stainless steel shaft.
- Graphite/ceramic mechanical seal.
- Suitable for maximum hot water*
- temperature up to 70°C.



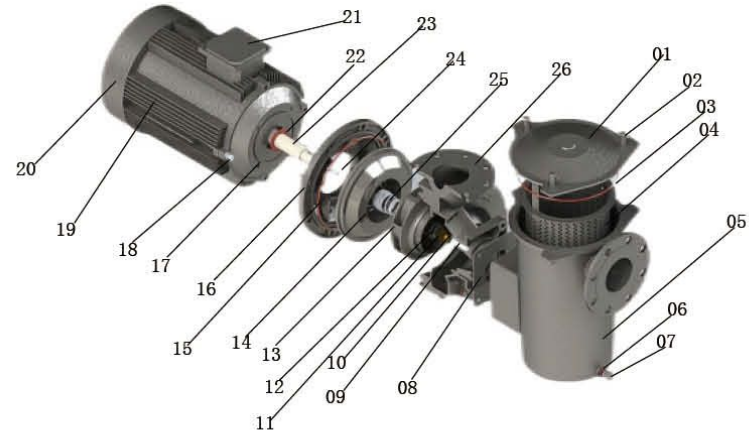
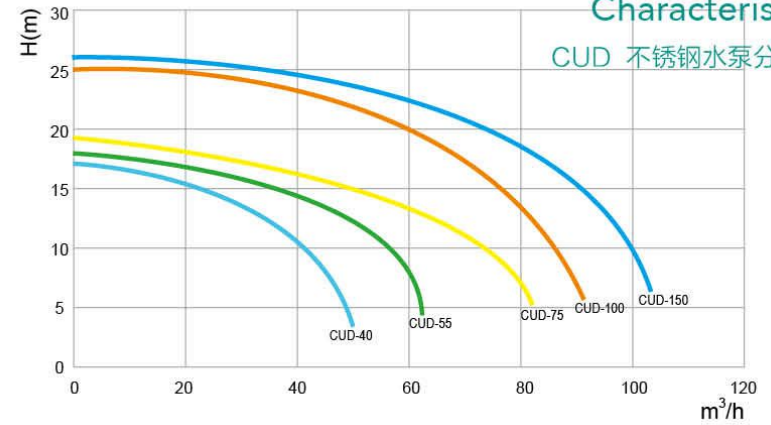
- IP55 防水标准;
- 流量大;
- 超静音;
- 承压能力强, 可达到 6kg/cm²;
- 316 不锈钢机轴;
- 石墨 / 碳化硅机械密封;
- 最高适用于 70°C 温泉;

Model	Voltage	Power		Hmax (m)	Qmax (m ³ /h)	Port Size (mm)	Motor Speed (r/min)
型号	电压 (V)	KW	HP	最大扬程	最大流量	管径	电机转速
CUD-40	380V/50Hz	3.0	4.0	18	50	90 3.0"	2800
CUD-55		4.0	5.5	18	62		
CUD-75		5.5	7.5	19	82		
CUD-100		7.5	10	20	91		
CUD-150		11	15	20	103		

以上数据仅供参考, 以每次出货产品数据为准

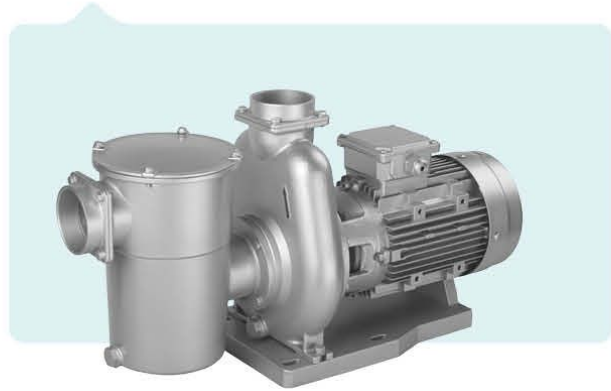
Above size only for reference ,pls take shipping products size as correct.

CUD Series Stainless Steel Water Pump Technical Characteristics

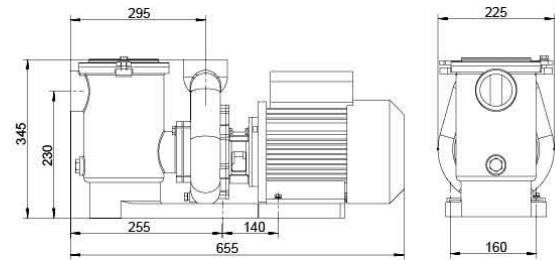


Number	Name	Number	Name	Number	Name
编号	配件名称	编号	配件名称	编号	配件名称
01	桶体盖 Filter VAT cover	10	盖型螺母 NUT	19	电机 Motor
02	螺丝 *3 Screw*3	11	弹性垫圈 Elastic gasket	20	后风罩 Ventilation Hood
03	O 型密封圈 O-ring Seal	12	平垫圈 Gasket	21	电机接线盒 Junction Box
04	过滤篮 Filter Basket	13	叶轮 Impeller	22	O 型密封圈 O-ring Seal
05	桶体 Filter VAT	14	法兰 Flange	23	电机轴 Motor shaft
06	O 型密封圈 O-ring Seal	15	O 型密封圈 O-ring Seal	24	螺丝 *10 Screw*10
07	螺塞 PLUG	16	法兰盖 Flange Cover	25	机械密封 Mechanical seal
08	橡胶垫片 gasket	17	电机法兰 Motor Flange	26	泵体 Pump Body
09	螺丝 *4 Screw*4	18	螺丝 *4 Screw*4		

CUL 不锈钢水泵 CUL Series Stainless Steel Water Pump



- IP55 waterproof standard.
- Big flow rate.
- Ultra-quiet.
- Maximum working pressure up to 6kg/cm².
- 316 stainless steel shaft.
- Graphite/ceramic mechanical seal.
- Suitable for maximum hot water^a.
- temperature up to 70 C.

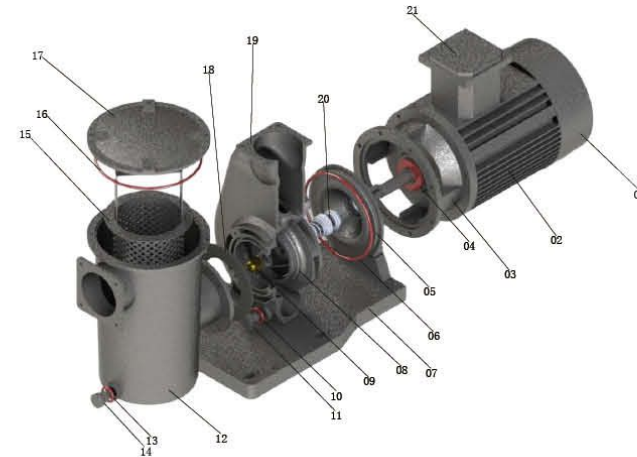
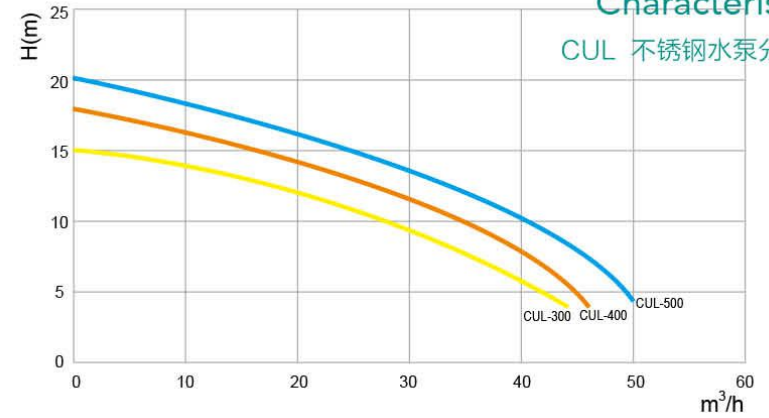


- IP55 防水标准;
- 流量大;
- 超静音;
- 承压能力强, 可达到 6kg/cm²;
- 316 不锈钢机轴;
- 石墨 / 碳化硅机械密封;
- 最高适用于 70°C 温泉;

Model	Voltage	Power		Hmax (m)	Qmax (m ³ /h)	Port Size (mm)	Motor Speed (r/min)
型号	电压 (V)	KW	HP	最大扬程	最大流量	管径	电机转速
CUL-300	380V/50Hz	2.2	3.0	15	44	75 2.5"	2800
CUL-400		3.0	4.0	18	46		
CUL-500		3.8	5.0	20	50		

以上数据仅供参考, 以每次出货产品数据为准
Above size only for reference ,pls take shipping products size as correct.

CUL Series Stainless Steel Water Pump Technical Characteristics

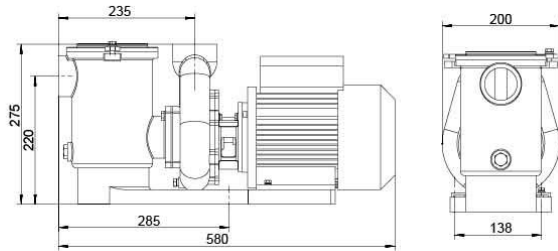


Number	Name	Number	Name	Number	Name
编号	配件名称	编号	配件名称	编号	配件名称
01	后风罩 Ventilation Hood	08	叶轮 Impeller	15	过滤篮 Filter Basket
02	电机 Motor	09	螺母 NUT	16	O型密封圈 O-ring Seal
03	电机法兰 Motor Flange	10	O型密封圈 O-ring Seal	17	桶体盖 Filter VAT cover
04	用水环 water deflector ring	11	螺塞 PLUG	18	密封垫 gasket
05	泵体盖 Pump Body cover	12	桶体 Filter VAT	19	泵体 Pump Body
06	O型密封圈 O-ring Seal	13	O型密封圈 O-ring Seal	20	机械密封 Mechanical seal
07	底座 Base	14	螺塞 PLUG	21	电机接线盒 Junction Box

CU 不锈钢水泵 CU Series Stainless Steel Water Pump



- IP55 waterproof standard.
- Big flow rate.
- Ultra-quiet.
- Maximum working pres-sure up to 6kg/cm².
- 316 stainless steel shaft.
- Graphite/ceramic mechanical seal.
- Suitable for maximum hot water*
- temperature up to 70 C.



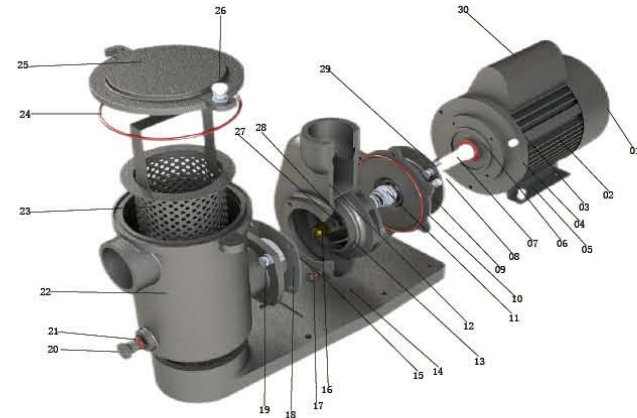
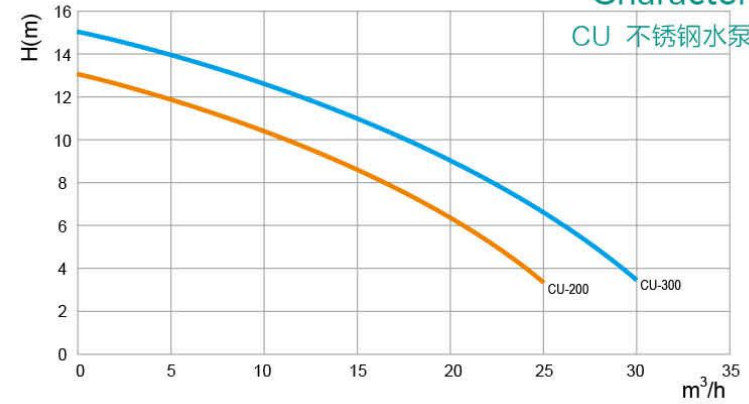
- IP55 防水标准;
- 流量大;
- 超静音;
- 承压能力强, 可达到 6kg/cm²;
- 316 不锈钢机轴;
- 石墨 / 碳化硅机械密封;
- 最高适用于 70°C 温泉;

Model	Voltage	Power		Hmax (m)	Qmax (m ³ /h)	Port Size (mm)	Motor Speed (r/min)
型号	电压 (V)	KW	HP	最大扬程	最大流量	管径	电机转速
CU-200	380V/50Hz	1.5	2	13	25	63 2"	2800
CU-300		2.2	3	15	30		

以上数据仅供参考, 以每次出货产品数据为准
Above size only for reference ,pls take shipping products size as correct.

CU Series Stainless Steel Water Pump Technical Characteristics

CU 不锈钢水泵分解图

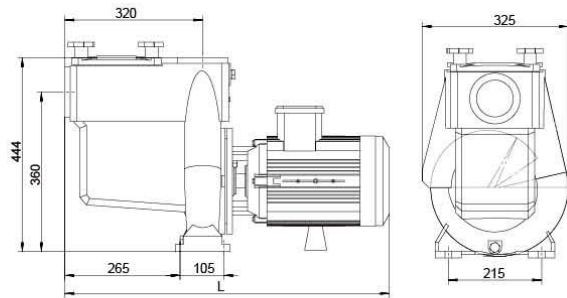


Number	Name	Number	Name	Number	Name
编号	配件名称	编号	配件名称	编号	配件名称
01	后风罩 Filter VAT cover	11	机械密封 Mechanical seal	21	O型密封圈 O-ring Seal
02	电机 Motor	12	泵体 Pump Body	22	桶体 Filter VAT
03	螺丝 *3 Screw*3	13	叶轮 Impeller	23	过滤篮 Filter Basket
04	电机法兰 Motor Flange	14	底座 Base	24	O型密封圈 O-ring Seal
05	螺丝 *4 Screw*4	15	O型密封圈 O-ring Seal	25	桶体盖 Filter VAT cover
06	甩水环 water deflector ring	16	螺母 NUT	26	螺丝 *2 Screw*2
07	电机轴 Motor shaft	17	螺塞 PLUG	27	弹性垫圈 Elastic gasket
08	螺丝 *6 Screw*6	18	密封垫 Gasket	28	垫圈 Gasket
09	法兰 Flange	19	螺丝 *4 Screw*4	29	螺丝 *4 Screw*4
10	O型密封圈 O-ring Seal	20	螺塞 PLUG	30	电机接线盒 Junction Box

H 系列铸铁泵 H Series Cast Iron Water Pump



- IP55 waterproof standard.
- Big flow rate.
- Ultra-quiet.
- Maximum working pressure up to 6kg/cm².
- 316 stainless steel shaft.
- Graphite/ceramic mechanical seal.
- Suitable for maximum hot water*
- temperature up to 70 C.



- IP55 防水标准;
- 流量大;
- 超静音;
- 承压能力强, 可达到 6kg/cm²;
- 316 不锈钢机轴;
- 石墨 / 碳化硅机械密封;
- 最高适用于 70°C 温泉;

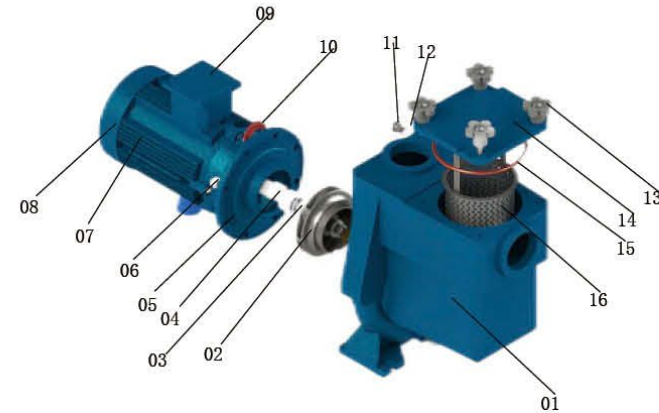
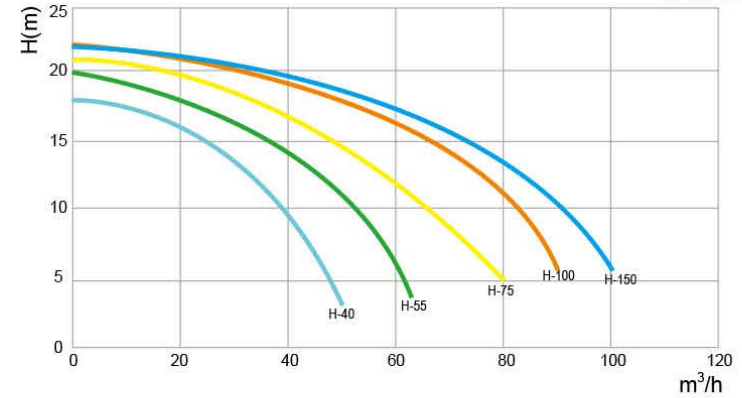
Model	Voltage	Power		Hmax (m)	Qmax (m ³ /h)	Port Size (mm)	Motor Speed (r/min)
型号	电压 (V)	KW	HP	最大扬程	最大流量	管径	电机转速
H-40	380V/50Hz	3	4	18	50	90 3.0"	2800
H-55		4	5.5	20	63		
H-75		5.5	7.5	21	80		
H-100		7.5	10	22	90		
H-150		11	15	25	100		

以上数据仅供参考, 以每次出货产品数据为准

Above size only for reference ,pls take shipping products size as correct.

H Series Cast Iron Water Pump Technical Characteristics

H 系列铸铁泵分解图

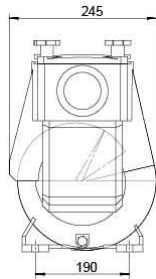
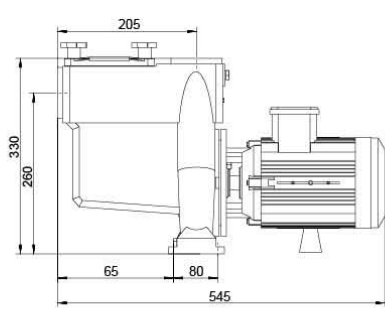


Number	Name	Number	Name	Number	Name
编号	配件名称	编号	配件名称	编号	配件名称
01	泵体 Pump Body	07	电机 Motor	13	梅花螺母 Torx nut
02	叶轮 Impeller	08	后风罩 Ventilation Hood	14	桶体盖 Filter VAT cover
03	机械密封 Mechanical seal	09	电机接线盒 Junction Box	15	O型密封圈 O-ring Seal
04	机械密封 Mechanical seal	10	甩水环 water deflector ring	16	过滤篮 Filter Basket
05	法兰 Flange	11	螺塞 PLUG		
06	螺丝 *8 Screw*8	12	O型密封圈 O-ring Seal		

HS 系列铸铁泵 HS Series Cast Iron Water Pump



- IP55 waterproof standard.
- Big flow rate.
- Ultra-quiet.
- Maximum working pressure up to 6kg/cm².
- 316 stainless steel shaft.
- Graphite/ceramic mechanical seal.
- Suitable for maximum hot water*
- temperature up to 70 C.



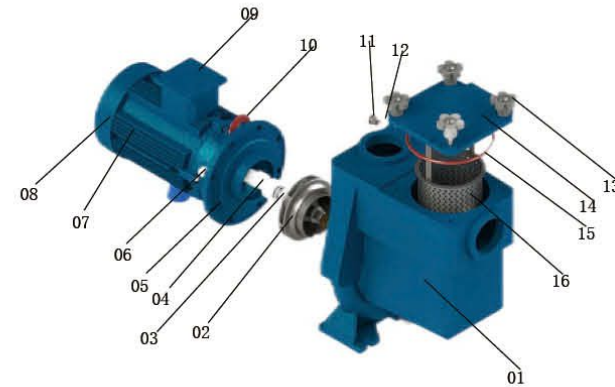
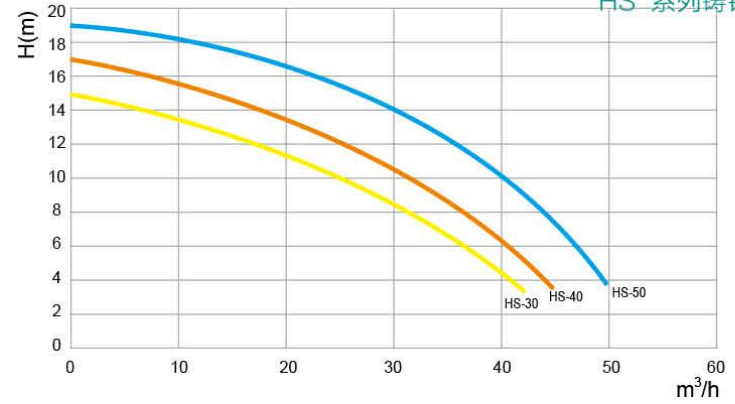
- IP55 防水标准;
- 流量大;
- 超静音;
- 承压能力强, 可达到 6kg/cm²;
- 316 不锈钢机轴;
- 石墨 / 碳化硅机械密封;
- 最高适用于 70°C 温泉;

Model	Voltage	Power		Hmax (m)	Qmax (m ³ /h)	Port Size (mm)	Motor Speed (r/min)
型号	电压 (V)	KW	HP	最大扬程	最大流量	管径	电机转速
HS-30	380V/50Hz	2.2	3.0	15	42	75 2.5"	2800
HS-40		3.0	4.0	17	45		
HS-50		3.8	5.0	19	50		

以上数据仅供参考, 以每次出货产品数据为准
Above size only for reference ,pls take shipping products size as correct.

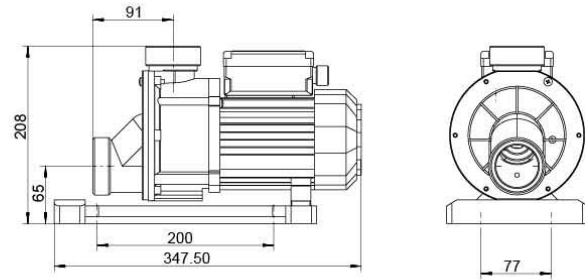
HS Series Cast Iron Water Pump Technical Characteristics

HS 系列铸铁泵分解图



Number	Name	Number	Name	Number	Name
编号	配件名称	编号	配件名称	编号	配件名称
01	泵体 Pump Body	07	电机 Motor	13	梅花螺帽 Torx nut
02	叶轮 Impeller	08	后风罩 Ventilation Hood	14	桶体盖 Filter VAT cover
03	机械密封 Mechanical seal	09	电机接线盒 Junction Box	15	O型密封圈 O-ring Seal
04	机械密封 Mechanical seal	10	甩水环 water deflector ring	16	过滤篮 Filter Basket
05	法兰 Flange	11	螺塞 PLUG		
06	螺丝 *8 Screw*8	12	O型密封圈 O-ring Seal		

EL 系列浴缸泵 EL Series Bathtub Pump



- IP55 waterproof standard.
- Big flow rate.
- Ultra-quiet.
- Maximum working pressure up to 6kg/cm².
- 316 stainless steel shaft.
- Graphite/ceramic mechanical seal.
- Suitable for maximum hot water*
- temperature up to 70 C.

- IP55 防水标准;
- 流量大;
- 超静音;
- 承压能力强, 可达到 6kg/cm²;
- 316 不锈钢机轴;
- 石墨 / 碳化硅机械密封;
- 最高适用于 70°C 温泉;

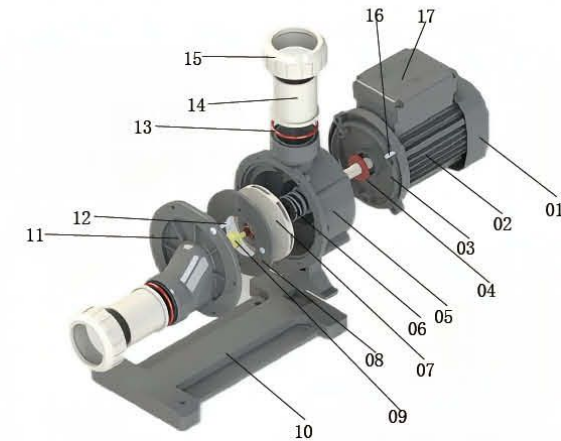
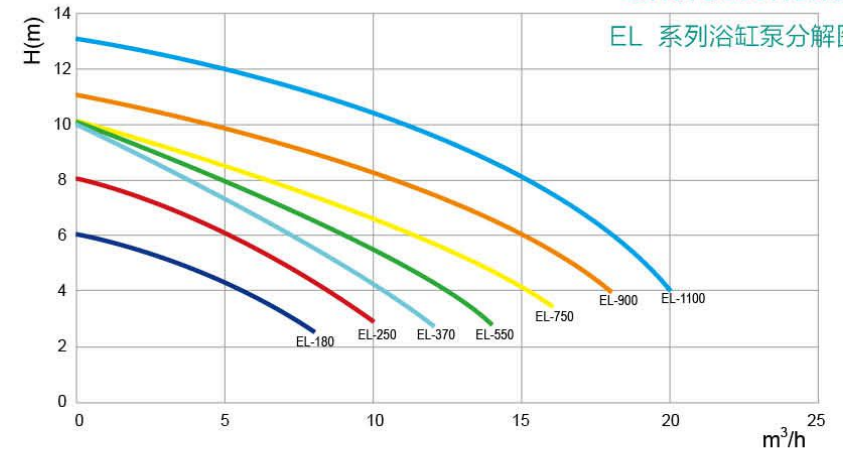
Model	Voltage	Power		Hmax (m)	Qmax (m ³ /h)	Port Size (mm)
型号	电压 (V)	KW	HP	最大扬程	最大流量	管径
EL-180	220V 50Hz/60Hz	0.18	0.25	6	8	50 1.5"
EL-250		0.25	0.35	8	10	
EL-370		0.37	0.5	10	12	
EL-550		0.55	0.75	10	14	
EL-750		0.75	1.0	10	16	
EL-900		0.9	1.2	11	18	
EL-1100		1.1	1.5	13	20	

以上数据仅供参考, 以每次出货产品数据为准

Above size only for reference ,pls take shipping products size as correct.

EL Series Bathtub Pump Technical Characteristics

EL 系列浴缸泵分解图



Number	Name	Number	Name	Number	Name
编号	配件名称	编号	配件名称	编号	配件名称
01	后风罩 Ventilation Hood	07	叶轮 Impeller	13	O 型密封圈 O-ring Seal
02	电机 Motor	08	密封圈 ring Seal	14	衬套 Union Bushing
03	电机法兰 Motor Flange	09	止退螺丝 Backstop Screw	15	活接螺帽 NUT
04	甩水环 water deflector ring	10	底座 Base	16	螺丝 *3 Screw*3
05	法兰 Flange	11	泵体盖 Pump body cover	17	电机接线盒 Junction Box
06	机械密封 Mechanical seal	12	螺丝 *6 Screw*6		

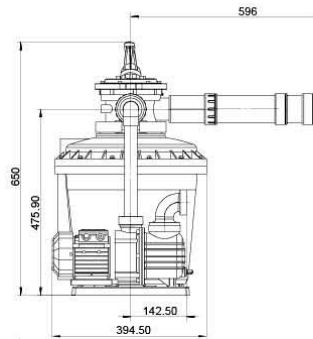
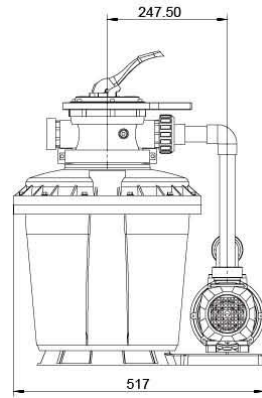
SLS 水泵过滤器套装

SLS Filter With Pump Set



- IP55 waterproof standard.
- Big flow rate.
- Ultra-quiet.
- Maximum working pressure up to 6kg/cm².
- 316 stainless steel shaft.
- Graphite/ceramic mechanical seal.
- Suitable for maximum hot water⁹ temperature up to 70 C.

- IP55 防水标准;
- 流量大;
- 超静音;
- 承压能力强, 可达到 6kg/cm²;
- 316 不锈钢机轴;
- 石墨 / 碳化硅机械密封;
- 最高适用于 70°C 温泉;



HFPSLS Swimming & Pond Bio Filter	
HFPSLS 系列泳池 & 池塘生化过滤器	
Pump Power	250W
泵匹配功率	
Filter inlet/outlet diameter	1.25"/1.5"(32/50mm)
过滤桶出水口径	
Filter flow rate	6m ³ /h, 8m ³ /h (with 32 or 50mm hose)
可选过滤桶流量	(适配 32mm 或者 50mm 管)
Filter Pressure	2.5kg
过滤桶压力	
Filter Media	Biochemical filter cotton ball (1kg)
滤芯	生化过滤棉球 (1kg)
UV Light Power	10w
UV 灯功率	
Filter Capacity	20L
过滤桶容积	
Suitable Pool & Pond Size	<45m ³
适用泳池 / 池塘水量	

以上数据仅供参考, 以每次出货产品数据为准

Above size only for reference, pls take shipping products size as correct.

SLS Filter With Pump Set Technical Characteristics

SLS 水泵过滤器套装分解图



Number	Name	
编号	配件名称	
01	缸头手柄	Cylinder head controller
02	缸头扳手	Cylinder head wrench
03	缸头	Cylinder Head
04	过滤桶盖 (加大)	Filter VAT cover increased
05	过滤桶体	Filter VAT
06	三通接头	Tee Joint
07	SLS 水泵	SLS Water Pump
08	杀菌灯螺帽 (内装杀菌灯)	Germicidal lamp nut (Built-in germicidal lamp)



Number	Name	
编号	配件名称	
01	缸头手柄	Cylinder head controller
02	缸头扳手	Cylinder head wrench
03	缸头	Cylinder Head
04	扣夹 A/B	Clamp A/B
05	过滤桶盖	Filter VAT cover
06	分水篮	Diversion basket
07	PVC 水管	PVC pipe
08	过滤器 / 盖	Filter/Filter Cover
09	过滤桶体	Filter VAT

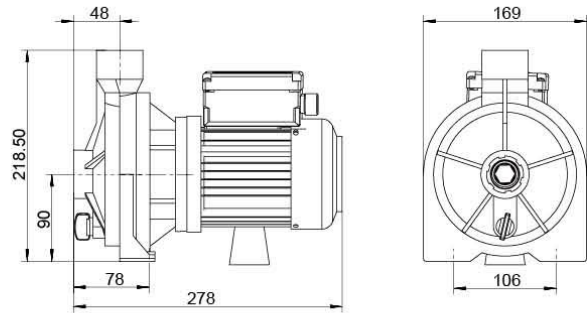


Number	Name	
编号	配件名称	
01	缸头手柄	Cylinder head controller
02	缸头扳手	Cylinder head wrench
03	缸头	Cylinder Head
04	过滤桶盖	Filter VAT cover
05	过滤桶体	Filter VAT

HSB 型水泵 HSB Series Water Pump



- IP55 waterproof standard.
- Big flow rate.
- Ultra-quiet.
- Maximum working pressure up to 6kg/cm².
- 316 stainless steel shaft.
- Graphite/ceramic mechanical seal.
- Suitable for maximum hot water*
- temperature up to 70°C.



- IP55 防水标准;
- 流量大;
- 超静音;
- 承压能力强, 可达到 6kg/cm²;
- 316 不锈钢机轴;
- 石墨 / 碳化硅机械密封;
- 最高适用于 70°C 温泉;

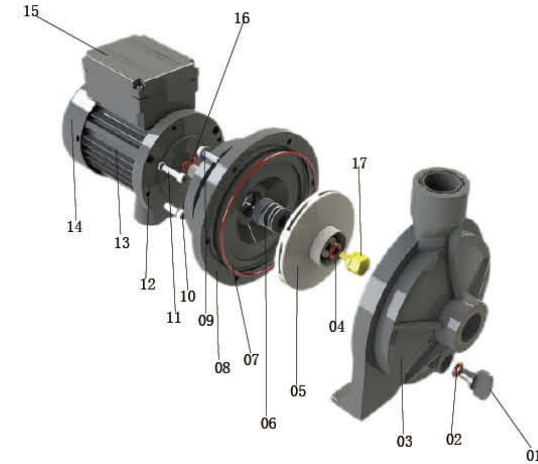
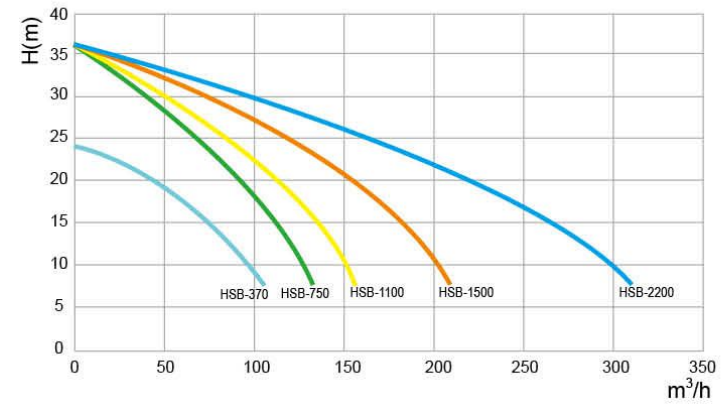
Model	Voltage	Power		Hmax (m)	Qmax (L/min)	Port Size (mm)
型号	电压 (V)	KW	HP	最大扬程	最大流量	管径
HSB-370	220V/380V 50Hz/60Hz	0.37	0.5	24	100/106	25 1"
HSB-750		0.75	1.0	36	125/132	
HSB-1100		1.1	1.5	35	150/155	
HSB-1500		1.5	2.0	32	200/209	40 1.5"
HSB-2200		2.2	3.0	30	300/310	

以上数据仅供参考, 以每次出货产品数据为准

Above size only for reference ,pls take shipping products size as correct.

HSB Series Water Pump Technical Characteristics

HSB 型水泵分解图



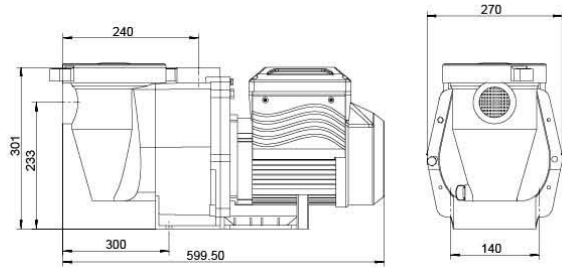
Number	Name	Number	Name	Number	Name
编号	配件名称	编号	配件名称	编号	配件名称
01	螺栓 Bolt	07	O型密封圈 O-ring Seal	13	电机 Motor
02	O型密封圈 O-ring Seal	08	法兰 Flange	14	后风罩 Ventilation Hood
03	泵体 Pump Body	09	螺丝 *6 Screw*6	15	电机接线盒 Junction Box
04	O型密封圈 O-ring Seal	10	螺丝 *4 Screw*4	16	甩水环 water deflector ring
05	叶轮 Impeller	11	螺丝 *3 Screw*3	17	止退螺丝 Backstop Screw
06	机械密封 Mechanical seal	12	电机法兰 Motor Flange		

VFP 型变频水泵

VFP Series Variable Speed Water Pump



- IP55 waterproof standard.
- Big flow rate.
- Ultra-quiet.
- Maximum working pressure up to 6kg/cm².
- 316 stainless steel shaft.
- Graphite/ceramic mechanical seal.
- Suitable for maximum hot water[®].
- temperature up to 70°C.



- IP55 防水标准;
- 流量大;
- 超静音;
- 承压能力强, 可达到 6kg/cm²;
- 316 不锈钢机轴;
- 石墨 / 碳化硅机械密封;
- 最高适用于 70°C 温泉;

Model	Voltage	Power		Hmax (m)	Qmax (m ³ /h)	Port Size (mm)	Motor Speed (r/min)
型号	电压 (V)	KW	HP	最大扬程	最大流量	管径	电机转速
VFP-150	220V/380V 50Hz/60Hz	0.4	0.5	6	14	63 2"	1600
		0.5	0.5	9	17		1900
		0.7	0.5	11	20		2200
		0.9	0.75	14	23		2500
		1.0	1.2	18	25		2800
1.1		1.5	18	28	2800		
VFP-200		0.5	0.6	7	17		1600
		0.6	0.7	9	20		1900
		0.8	0.9	12	23		2200
		1.0	1.2	15	26		2500
	1.3	1.5	18	28	2800		
VFP-300	1.5	2.0	19	30	2900		
	0.4	0.5	5	19	1600		
	0.6	0.75	7	21	1900		
	0.9	1.2	10	25	2200		
	1.3	1.8	13	29	2500		
	1.8	2.5	17	32	2800		
	2.2	3.0	21	35	2900		

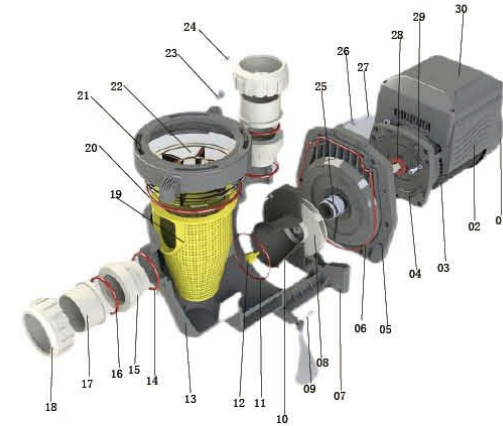
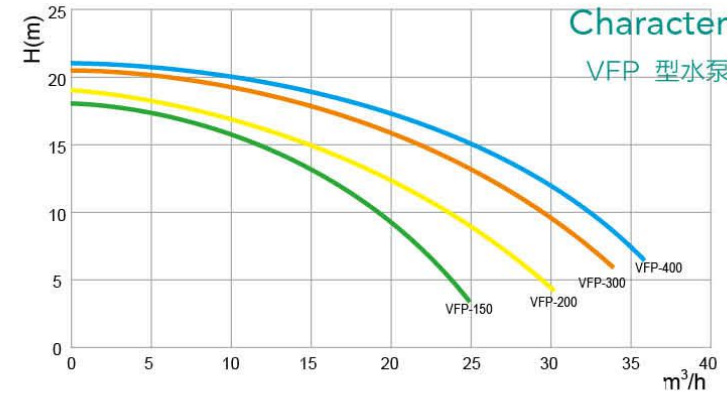
以上数据仅供参考, 以每次出货产品数据为准

Above size only for reference ,pls take shipping products size as correct.

VFP Series Variable Speed Water Pump Technical Characteristics

Characteristics

VFP 型水泵分解图



Number	Name	Number	Name	Number	Name
编号	配件名称	编号	配件名称	编号	配件名称
01	后风罩 Ventilation Hood	11	O型密封圈 O-ring Seal	21	大螺帽 Lid Lock Ring
02	电机接线盒 Junction Box	12	止退螺丝 Backstop Screw	22	透明盖 Transparent Cover
03	电机 Motor	13	泵体 Pump Body	23	螺帽 *2 NUT*2
04	电机法兰 Motor Flange	14	O型密封圈 O-ring Seal	24	螺帽 *4 NUT*4
05	法兰 Flange	15	活接 Union	25	机械密封 Mechanical seal
06	O型密封圈 O-ring Seal	16	O型密封圈 O-ring Seal	26	螺丝 *6 Screw*6
07	底座 Base	17	衬套 Union Bushing	27	螺丝 *6 Screw*6
08	叶轮 Impeller	18	活接螺帽 Union Nut	28	甩水环 Water deflector ring
09	螺丝 *2 Screw*2	19	过滤篮 Filter Basket	29	螺丝 *3 Screw*3
10	散水器 Diffuser	20	O型密封圈 O-ring Seal	30	变频器 Frequency converter

CC Series Commercial Sand Filter



New spiral cover system which aids the operations of opening and closing. The air purge is built into the cover which can be efficient to release the air from the filter.

The distance between the upper part of the sand layer and the diffuser head ("freeboard") has been increased to ensure greater distribution of water in the filtration phase and avoid sand being spilled into the drain during backwash.

The specially designed manhole in the sand filter can make the sand exchanging process more convenient and efficient. In the filtering process, the filtering effect of water can be observed through the perspective manhole which is designed in the sand filter.

Equipped with manual exhaust valve and exhaust pipe, which can automatically discharge the gas in running and debugging.

Commercial sand filter is used in larger size installations, such as commercial and communal swimming pool, aquatic park, aquariums and other place where need water treatment.

顶盖是采用快关原理设计，带一个顶置螺纹口压板，方便打开和关闭并有良好的密封效果；

另外增大滤床表面到布水头的距离，从而提高过滤阶段的布水效果，并避免在反冲洗时砂粒落入布水管内；

特别设计的侧人孔，使砂缸在换沙过程中更方便、高效，水过滤过程中，可通过设计的透视镜观察水质的过滤情况，并适时进行反冲洗操作，侧人孔和透视镜属可选配件；

配有手动排气阀和缸内排气管，运行和调试时能自动排放缸内的气体。

商用大型砂缸适用于体积较大的场所，例如商业用水或公共游泳池，水上乐园，水族馆等水处理领域；

Model	Port Size	Filter Area	Flow	Required Sand Weight	Required Gravel Weight	Pool Size
型号	进出水管口径 (mm)	过滤面积 (m ²)	流量 (m ³ /h)	所需细砂重量 (kg)	所需粗砂重量 (kg)	泳池体积 (m ³)
CC 1200	80	1.13	50	1250	300	270-360
CC 1400	100	1.54	68	1760	500	360-480
CC 1600	100	2.01	80	2450	750	480-640
CC 1800	150	2.54	101	3100	750	640-800
CC 2000	150	3.14	125	3800	1150	800-1000
CC 2350	200	4.15	166	5030	1600	1000-1300
CC 2500	200	4.9	200	5950	2200	1400-1600
CC 3000	200	7.07	282	8600	3300	1600-2250

以上数据仅供参考，以每次出货产品数据为准

Above size only for reference ,pls take shipping products size as correct.

CC Series Commercial Sand Filter

注意事项:

▲转换缸头多向阀上任何功能之前必须关掉水泵电源，循环水的温度最高为 50℃ (122° F) .

▲砂缸过滤器最大工作压力为: 2.5Kg (250Kpa/36psi/2.5bar) , 最大测试压力为: 4Kg (400Kpa/58psi/4.0bar) 。可按指定不同颜色、不同耐压程度来特殊订做，最高操作温度为: 50℃ (122° F) .

▲缸体内所装石英砂规格为: 0.5-0.8mm. 粗砂规格为: 1-2mm.

Attentions

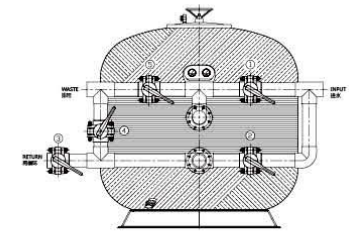
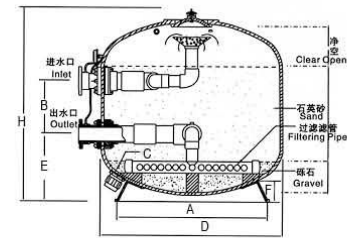
▲ Turn off the water pump power before convert any function on the multi-valve, the temperature of the circulating water up to 50°C (122°F).

▲ Sand filter maximum working pressure: 2.5Kg (250Kpa/36psi/2.5bar), the maximum pressure test is 4Kg (400Kpa/58psi/4.0bar). Can be produced according to specify different color, different degree of pressure. The maximum operating temperature is: 50°C (122°F).

▲ The coarse silica sand specification is 0.5mm-0.8mm, Fine sand specifications is: 1mm-2mm.

尺寸

Sand Filter Size



功能 FUNCTION	阀门代号 VALVE NO.	①	②	③	④	⑤
filter		open	close	open	close	close
过滤		开	关	开	关	关
backwash		close	open	close	close	open
反冲洗		关	开	关	关	开
rinse		open	close	close	open	close
漂洗		开	关	关	开	关
waste		open	close	close	close	open
排污		开	关	关	关	开
recirculate		close	open	open	close	close
再循环		关	开	开	关	关

	CC1200	CC1400	CC1600	CC1800	CC2000	CC2300	CC2500
D (MM)	1200	1400	1600	1800	2000	2350	2500
H (MM)	1400	1600	1750	1950	2140	2350	2450
E (MM)	560	650	680	730	800	940	960
A (MM)	980	1215	1450	1610	1800	2010	2020
F (MM)	165	165	215	215	240	240	240
B (MM)	340	340	450	550	550	600	600
C (MM)	60	60	60	60	60	60	60

CT 系列顶出砂缸

CT Series Top Mount Sand Filter



Multy-valve is made of import ABS material,increased the elasticity, tensile strength and heat resistance, corrosion resistance,and the surface is smooth, good brightness, high hardness.

Fiberglass sand filters are manufactured using high quality unsaturated polyester resin, good elasticity and strong corrosion resistance, fiberglass winding reinforced filter tank stronger,combined with handwork and import resin, fiber,spray gun injection production , sturdy and durable,higher production efficiency.

The surface spray heavy duty UV protective layer after the overall filament winding,Beautiful, durable, strong UV protection ability,it can be used for a long time in different work and climate environment.

缸头多向阀材料为进口 ABS 工程塑料制成,增加了材料的弹性、强度以及耐热、耐腐蚀性,而且表面光滑、亮度好,硬度高;

玻璃纤维砂缸过滤器使用高品质不饱和聚酯树脂制作内胆,弹性及防腐性能能力强,玻璃纤维缠绕加固缸体更结实,结合手工和进口的专业树脂、纤维混合喷枪喷射制作,坚固耐用、不易破裂,生产效率更高;

整体纤维缠绕之后外表喷涂防紫外线的聚氨酯保护层,美观、耐用,防紫外线能力强,在日照雨淋等多种工作和气候环境下能长时间使用;

Model	Port Size Inches	Port Size	Filter Area	Flow	0.5-0.8mm Sand Weight	Tank Vol.	Tank Weight	Valve Vol.	Valve Weight	Pool Size
型号	英寸	进出水管口径 (mm)	过滤面积 (m²)	流量 (m³/h)	0.4-0.8mm 砂量 (kg)	缸体 体积 (m³)	缸体 重量 (kg)	缸头 体积 (m³)	缸头 重量 (kg)	泳池体积 (m³)
CT 400	16	1.5"50	0.11	6	40	0.09	11	0.02	3	42-50
CT 450	18	1.5"50	0.14	8	70	0.15	13	0.02	3	50-65
CT 500	21	1.5"50	0.2	10	100	0.17	16	0.02	3	65-95
CT 650	25	1.5"50	0.3	16	210	0.32	20	0.02	3	95-130
CT 700	28	1.5"50	0.37	19	310	0.42	28	0.02	3	130-165
CT 800	32	2"63	0.5	25	420	0.68	41	0.03	5	165-200
CT 900	36	2"63	0.64	30	600	0.95	48	0.03	5	200-240
CT 1000	40	2"63	0.79	35	780	1.29	58	0.03	5	240-265
CT 1100	44	2"63	0.98	44	1000	1.94	64	0.03	5	265-300
CT 1200	48	2"63	1.13	50	1320	2.26	68	0.03	5	300-360

以上数据仅供参考,以每次出货产品数据为准

Above size only for reference ,pls take shipping products size as correct.

CT 系列顶出砂缸

CT Series Top Mount Sand Filter

注意事项:

▲转换缸头多向阀上任何功能之前必须关掉水泵电源,循环水的温度最高为 50°C (122° F) .

▲砂缸过滤器最大工作压力为: 2.5Kg (250Kpa/36psi/2.5bar) ,最大测试压力为: 4Kg (400Kpa/58psi/4.0bar) 。可按指定不同颜色、不同耐压程度来特殊订做,最高操作温度为: 50°C (122° F) .

▲缸体内所装石英砂规格为: 0.5-0.8mm.粗砂规格为: 1-2mm.

Attentions

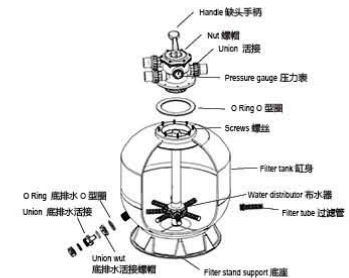
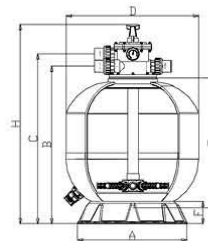
▲ Turn off the water pump power before convert any function on the multy-valve,the temperature of the circulating water up to 50°C (122°F).

▲ Sand filter maximum working pressure:2.5Kg(250Kpa/36psi/2.5bar),the maximum pressure test is 4Kg(400Kpa/58psi/4.0bar).Can be produced according to specify different color, different degree of pressure.The maximum operating temperature is: 50°C (122°F).

▲ The coarse silica sand specification is 0.5mm-0.8mm,Fine sand specifications is: 1mm-2mm.

尺寸

Sand Filter Size



	CT400	CT450	CT500	CT650	CT700	CT800	CT900	CT1000	CT1100	CT1200
D (MM)	400	450	500	650	700	800	900	1000	1100	1200
H (MM)	765	815	865	1025	1075	1195	1320	1425	1550	1610
E (MM)	400	450	500	650	700	800	900	1000	1100	1200
A (MM)	405	405	405	570	570	710	710	820	1020	1020
F (MM)	100	100	100	110	110	130	130	140	140	140
B (MM)	560	610	660	820	870	965	1090	1195	1320	1380
C (MM)	620	670	720	880	930	1035	1160	1265	1390	1450

CS Series Side Mount Sand Filter



Mully-valve is made of import ABS material,increased the elasticity, tensile strength and heat resistance, corrosion resistance,and the surface is smooth, good brightness, high hardness.

Fiberglass sand filters are manufactured using high quality unsaturated polyester resin, good elasticity and strong corrosion resistance, fiberglass winding reinforced filter tank stronger,combined with handwork and import resin, fiber,spray gun injection production , sturdy and durable,higher production efficiency.

The surface spray heavy duty UV protective layer after the overall filament winding,Beautiful, durable, strong UV protection ability,it can be used for a long time in different work and climate environment.

缸头多向阀材料为进口 ABS 工程塑料制成,增加了材料的弹性、强度以及耐热、耐腐蚀性,而且表面光滑、亮度好,硬度高;

玻璃纤维砂缸过滤器使用高品质不饱和聚酯树脂制作内胆,弹性及防腐性能力强,玻璃纤维缠绕加固缸体更结实,结合手工和进口的专业树脂、纤维混合喷枪喷射制作,坚固耐用、不易破裂,生产效率更高;

整体纤维缠绕之后外表喷涂防紫外线的聚氨酯保护层,美观、耐用,防紫外线能力强,在日照雨淋等多种工作和气候环境下能长时间使用;

Model	Port Size Inches	Port Size	Filter Area	Flow	0.5-0.8mm Sand Weight	Tank Vol.	Tank Weight	Valve Vol.	Valve Weight	Pool Size
型号	英寸	进出水管口径 (mm)	过滤面积 (m²)	流量 (m³/h)	0.4-0.8mm 砂量 (kg)	缸体 体积 (m³)	缸体 重量 (kg)	缸头 体积 (m³)	缸头 重量 (kg)	泳池 体积 (m³)
CS 450	18	1.5"50	0.14	8	56	0.15	15	0.02	3	50-65
CS 500	21	1.5"50	0.2	10	90	0.2	18	0.02	3	65-95
CS 650	25	1.5"50	0.3	15	170	0.32	25	0.02	3	95-130
CS 700	28	1.5"50	0.37	18.5	225	0.46	30	0.02	3	130-165
CS 800	32	2"63	0.5	25	380	0.68	45	0.03	5	165-200
CS 900	36	2"63	0.64	30	453	0.92	50	0.03	5	200-240
CS 1000	40	2"63	0.79	35	712	1.48	65	0.03	5	240-265
CS 1100	44	2"63	0.98	44	975	1.97	69	0.03	5	265-300
CS 1200	48	2"63	1.13	50	1220	2.42	92	0.03	5	300-360
CS 1400	56	2"63	1.53	68	1720	3.26	112	0.03	5	360-425

以上数据仅供参考,以每次出货产品数据为准

Above size only for reference ,pls take shipping products size as correct.

CS Series Side Mount Sand Filter

注意事项:

▲转换缸头多向阀上任何功能之前必须关掉水泵电源,循环水的温度最高为 50°C (122° F) .

▲砂缸过滤器最大工作压力为: 2.5Kg (250Kpa/36psi/2.5bar) ,最大测试压力为: 4Kg (400Kpa/58psi/4.0bar) 。可按指定不同颜色、不同耐压程度来特殊订做,最高操作温度为: 50°C (122° F) .

▲缸体内所装石英砂规格为: 0.5-0.8mm.粗砂规格为: 1-2mm.

Attentions

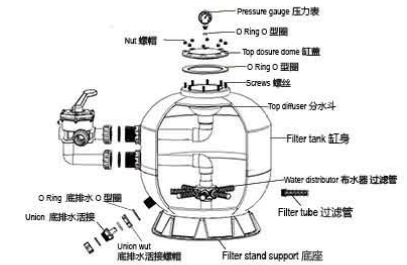
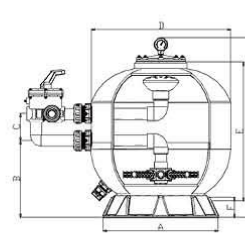
▲ Turn off the water pump power before convert any function on the mully-valve,the temperature of the circulating water up to 50°C (122°F).

▲ Sand filter maximum working pressure:2.5Kg(250Kpa/36psi/2.5bar),the maximum pressure test is 4Kg(400Kpa/58psi/4.0bar).Can be produced according to specify different color, different degree of pressure.The maximum operating temperature is: 50°C (122°F).

▲ The coarse silica sand specification is 0.5mm-0.8mm,Fine sand specifications is: 1mm-2mm.

尺寸

Sand Filter Size



	CS450	CS500	CS650	CS700	CS800	CS900	CS1000	CS1100	CS1200	CS1400
D (MM)	450	500	650	700	800	900	1000	1100	1200	1400
H (MM)	665	715	860	915	1015	1120	1350	1420	1520	1700
E (MM)	450	500	650	700	800	900	1000	1100	1200	1400
A (MM)	405	405	570	570	710	710	820	1020	1020	1300
F (MM)	100	100	110	110	130	130	140	140	140	150
B (MM)	260	260	300	320	400	440	510	530	600	800
C (MM)	130	130	130	130	230	230	230	230	230	230

单级单相旋涡式鼓风机系列
Single Stage Three Phase Side Channel Air Blower
Double Stage Three Phase Side Channel AirBlower
单级三相旋涡式鼓风机系列



XB 单级三相旋涡式鼓风机
XB Double Stage Three Phase Side Channel
AirBlower Suction

XBD 单级单相旋涡式鼓风机
XBD Single Stage Three Phase Side Channel
AirBlower Suction

ATTENTIONS

Centrifugal circulation design, high pressure, big wind power, air amortize design, even lower noise. Lubricate without oil design, purer air. High efficiency, wide application, and durable.

离心循环设计，压力高、风量；气流缓冲设计，噪音更低，气体更纯净；应用范围广，使用寿命长；

XB 单级三相旋涡式鼓风机吸 / 吐性能表 XB Double Stage Three Phase Side Channel AirBlower Suction/Discharge Performance Table								
Model	Frequency (Hz)	Rated Output (KW)	Voltage	Rated Current(A)	Maximum Air flow	Rated Pressure	Maximum Vacuum (mbar)	Sound Level
型号	频率	功率	电压	额定电流	最大排气量	额定吸入压力	额定排气压力	噪音
2XB 010 H06 (XB-200)	50	0.2	200-240 Δ 345-415Y	1.0 Δ /0.6Y	40	-60	70	50
	60	0.23	220-275 Δ 380-480Y	1.0 Δ /0.6Y	55	-60	70	51
2XB 110 H06 (XB-250)	50	0.25	200-240 Δ 345-415Y	2.1 Δ /1.2Y	80	-100	110	53
	60	0.29	220-275 Δ 380-480Y	2.0 Δ /1.15Y	98	-110	110	56
2XB 210 H16 (XB-400)	50	0.4	200-240 Δ 345-415Y	2.6 Δ /1.5Y	80	-120	130	53
	60	0.5	220-275 Δ 380-480Y	2.6 Δ /1.5Y	98	-150	160	56
2XB 230 H16 (XB-400)	50	0.4	200-240 Δ 345-415Y	2.6 Δ /1.5Y	105	-120	130	54
	60	0.5	220-275 Δ 380-480Y	2.6 Δ /1.5Y	120	-150	150	57
2XB 310 H06 (XB-550)	50	0.55	200-240 Δ 345-415Y	2.4 Δ /1.7Y	100	-120	130	57
	60	0.62	220-275 Δ 380-480Y	2.6 Δ /1.5Y	120	-120	130	60
2XB 330 H06 (XB-550)	50	0.55	200-240 Δ 345-415Y	2.8 Δ /1.6Y	140	-60	60	56
	60	0.63	220-275 Δ 380-480Y	3.0 Δ /1.7Y	165	-50	50	58
2XB 410 H06 (XB-750)	50	0.75	200-240 Δ 345-415Y	3.8 Δ /2.2Y	145	-120	120	63
	60	0.85	220-275 Δ 380-480Y	3.75 Δ /2.15Y	175	-130	130	64
2XB 430 H06 (XB-750)	50	0.75	200-240 Δ 345-415Y	3.8 Δ /2.2Y	180	-70	70	64
	60	0.85	220-275 Δ 380-480Y	3.8 Δ /2.2Y	210	-50	50	65
2XB 510 H06 (XB-1100)	50	1.1	200-240 Δ 345-415Y	4.2 Δ /2.3Y	210	-110	100	64
	60	1.3	220-275 Δ 380-480Y	4.0 Δ /2.3Y	255	-80	70	70
2XB 530 H06 (XB-1100)	50	1.1	200-240 Δ 345-415Y	4.0 Δ /2.3Y	270	-40	40	65
	60	1.3	220-275 Δ 380-480Y	4.2 Δ /2.4Y	330	-40	40	71
2XB 510 H16 (XB-1500)	50	1.5	200-240 Δ 345-415Y	6.6 Δ /3.8Y	210	-170	170	64
	60	1.75	220-275 Δ 380-480Y	6.9 Δ /4.0Y	255	-150	140	70
2XB 530 H16 (XB-1500)	50	1.5	200-240 Δ 345-415Y	6.6 Δ /3.8Y	270	-100	100	65
	60	1.75	220-275 Δ 380-480Y	6.9 Δ /4.0Y	330	-70	50	71

以上数据仅供参考，以每次出货产品数据为准

Above size only for reference ,pls take shipping products size as correct.

XB 单级三相旋涡式鼓风机吸 / 吐性能表 XB Double Stage Three Phase Side Channel AirBlower Suction/Discharge Performance Table								
Model	Frequency (Hz)	Rated Output	Voltage	Rated Current (A)	Maximum Air flow	Rated Pressure	Maximum Vacuum(mbar)	Sound Level
型号	频率	额定功率	电压	额定电流	最大排气量	额定吸入压力	额定排气压力	噪音
2XB 610 H16 (XB-2200)	50	2.2	200-240 Δ 345-415Y	10 Δ /5.6Y	270	-235	220	67
	60	2.5	220-275 Δ 380-480Y	10.3 Δ /6.5Y	315	-245	230	70
2XB 630 H16 (XB-2200)	50	2.2	200-240 Δ 345-415Y	9.7 Δ /5.6Y	345	-200	195	70
	60	2.55	220-275 Δ 380-480Y	10.3 Δ /6.0Y	415	-170	195	73
2XB 610 H26 (XB-3000)	50	3	200-240 Δ 345-415Y	12.5 Δ /7.2Y	270	-280	310	67
	60	3.45	220-275 Δ 380-480Y	12.5 Δ /7.3Y	315	-260	280	70
2XB 630 H26 (XB-3000)	50	3	200-240 Δ 345-415Y	12.5 Δ /7.2Y	345	-240	220	70
	60	3.45	220-275 Δ 380-480Y	12.6 Δ /6.7Y	415	-210	220	73
2XB 710 H37 (XB-4000)	50	4	345-415 Δ 600-720Y	9.0 Δ /5.2Y	318	-290	330	69
	60	4.6	380-480 Δ 660-720Y	9.4 Δ /5.2Y	376	-330	330	72
2XB 730 H37 (XB-4000)	50	4	345-415 Δ 600-720Y	9.0 Δ /5.2Y	420	-260	310	70
	60	4.6	380-480 Δ 660-720Y	9.0 Δ /5.2Y	500	-260	280	73
2XB 810 H17 (XB-5500)	50	5.5	345-415 Δ 600-720Y	12.9 Δ /7.4Y	530	-300	300	80
	60	6.3	380-480 Δ 660-720Y	12.9 Δ /7.45Y	620	-300	280	82
2XB 830 H17 (XB-5500)	50	5.5	345-415 Δ 600-720Y	12.9 Δ /7.4Y	700	-200	180	70
	60	6.3	380-480 Δ 660-720Y	12.9 Δ /7.45Y	840	-180	180	74
2XB 810 H27 (XB-7500)	50	7.5	345-415 Δ 600-720Y	16.7 Δ /9.6Y	530	-320	430	80
	60	8.6	380-480 Δ 660-720Y	17.3 Δ /10.0Y	620	-350	400	82
2XB 830 H27 (XB-7500)	50	7.5	345-415 Δ 600-720Y	16.7 Δ /9.6Y	700	-270	260	70
	60	8.6	380-480 Δ 660-720Y	17.3 Δ /10.0Y	840	-270	260	74
2XB 910 H07 (XB-8500)	210	8.5	345-415 Δ 600-720Y	18.2 Δ /10.5Y	1050	-210	210	74
	170	9.8	380-480 Δ 660-720Y	18.2 Δ /10.5Y	1250	-180	180	79
2XB 930 H07 (XB-8500)	170	8.5	345-415 Δ 600-720Y	18.2 Δ /10.5Y	1370	-120	110	75
	110	9.8	380-480 Δ 660-720Y	18.2 Δ /10.5Y	1650	-80	70	80
2XB 910 H17 (XB-12500)	50	12.5	345-415 Δ 600-720Y	28 Δ /16.2Y	1050	-280	270	74
	60	14.5	380-480 Δ 660-720Y	29 Δ /16.7Y	1250	-270	260	79
2XB 930 H17 (XB-12500)	50	12.5	345-415 Δ 600-720Y	28 Δ /16.2Y	1370	-210	190	75
	60	14.5	380-480 Δ 660-720Y	29 Δ /16.7Y	1650	-170	160	80
2XB 910 H37 (XB-12500)	50	18.5	345-415 Δ 600-720Y	37 Δ /21.0Y	1050	-340	460	74
	60	21.3	380-480 Δ 660-720Y	39 Δ /22.5Y	1250	-380	420	79
2XB 930 H37 (XB-12500)	50	18.5	345-415 Δ 600-720Y	37 Δ /21.0Y	1370	-310	320	75
	60	21.3	380-480 Δ 660-720Y	39 Δ /22.5Y	1650	-300	280	80

XBD 单级单相旋涡式鼓风机吸 / 吐性能表 XBD Single Stage Three Phase Side Channel AirBlower Suction/Discharge Performance Table								
Model	Frequency (Hz)	Rated Output	Voltage	Rated Current (A)	Maximum Air flow	Rated Pressure	Maximum Vacuum(mbar)	Sound Level
型号	频率	额定功率	电压	额定电流	最大排气量	额定吸入压力	额定排气压力	噪音
2XB 010 A01 (XBD-200)	50	0.2	200-240	1.43	40	-60	70	50
	60	0.23	200-240	1.3	55	-60	70	51
2XB 110 A01 (XBD-250)	50	0.25	200-240	1.7	55	-80	80	51
	60	0.28	200-240	1.9	60	-80	80	52
2XB 210 A11 (XBD-400)	50	0.4	200-240	2.7	80	-110	110	53
	60	0.5	200-240	3	96	-130	140	56
2XB 310 A01 (XBD-550)	50	0.55	200-240	3.7	100	-120	120	57
	60	0.62	200-240	4.5	120	-130	150	60
2XB 410 A01 (XBD-750)	50	0.75	200-240	4.5	145	-150	120	63
	60	0.85	200-240	5.6	175	-160	130	64
2XB 510 A01 (XBD-1100)	50	1.1	200-240	7.3	210	-160	100	64
	60	1.3	200-240	7.5	255	-150	70	70
2XB 510 A11 (XBD-1500)	50	1.5	200-240	9	210	-190	200	64
	60	1.75	200-240	9.5	255	-180	180	70

以上数据仅供参考，以每次出货产品数据为准

Above size only for reference ,pls take shipping products size as correct.